

# Pom Pom at Home

---

LIVE IN LINEN

*Catalog*  
2016



# Pom Pom AT HOME

## *Life's Little Luxury*

WE LOVE TO SURROUND OURSELVES WITH BEAUTIFUL THINGS!

As natives of Belgium, we naturally have a passion for everything “linen”. Our fabrics are versatile; with delicate embroidery, crushed velvet and hand-crocheted lace on the finest and softest linens. Pom Pom at Home embodies a “lived in” elegant look that is still relaxed and casual. This is the main inspiration for our unique collection which transforms everyday experiences into a sheer delight.

We have also recognized that we live in a time where we should be globally conscious of how our daily actions affect our environment. What better way to start and end your day than by having our linens as a reminder of how you did your part. Our 100% certified organic linens are made from the purest of Belgian flax fibers. The combination of luxury and environmental sustainability has never been so comfortable.

Pom Pom At Home embraces the essence of life's enjoyment. Its products evoke a sense of romantic glamour, peaceful memories, gentleness and freshness. Whether it is Pom Pom At Home's fine linens or accessories, all are made with the highest quality and attention to detail, always with a passion for beauty!

Our vision is that each of our products will fill you with delight and bring you that little touch of luxury that makes life more pleasurable.

*Enjoy!*

HILDE LEIAGHAT



## *Organic Flax from Belgium*

Pom Pom At Home takes pride in the newly developed and continually expanding 100% Organic Linen lines certified by GOTS (Global Organization of Textile Standards). Our linens are made from the finest Belgian flax fibers that are grown in the Flanders region of Belgium. Growing flax requires basically no irrigation and no interference of harsh chemicals, which does its part to keep the environment and atmosphere clean. Linen is completely biodegradable, fully recyclable, allergy-free, and long lasting.



The symbols below are to help you identify certain characteristics about our products:



COTTON



CERTIFIED ORGANIC



HANDMADE



MADE IN USA



LINEN

## *Customer Service*

Pom Pom At Home does a great job of recognizing that the clients come first. From designing, to ordering and more, everything is done carefully with the clients in mind. Having prior retail experience, the Leighats had certain “musts” in mind when Pom Pom at Home was created. These included stocking all items, ensuring quality products and guaranteeing attentive service. Accomplishing these goals has built a customer service at Pom Pom At Home that is unparalleled.



All of our colors are subject to dye lot variations.  
For additional information, sizing and care instructions  
visit us at [www.pompomathome.com](http://www.pompomathome.com)





*Coverlets*



## ANTWERP COLLECTION

*A true representation of casual elegance. This line is 100% stonewashed cotton and features a large quilted, square pattern. Poly fill.*

SHAMS | LARGE EURO (28" x 28") COVERLETS | KING (114" x 100")  
QUEEN (96" x 100")



CREAM



CAYENNE



NATURAL



NAVY



OCEAN



OLIVE



SKY



# BRUSSELS COLLECTION

*A grand and sophisticated line that has a diamond quilted pattern on the front made of 100% stonewashed cotton velvet. 85% cotton/15% poly fill.*

**SHAMS** | LARGE EURO (28" x 28")  
PILLOW (14" x 24")  
NOT AVAIL. IN BLACK INK

**COVERLETS** | KING (114" x 100")  
QUEEN (96" x 100")



BLACK INK



OCEAN



PEWTER



SEA FOAM



TAUPE



WALNUT



WHITE





# HAMPTON COLLECTION

*A timeless classic, the Hampton is a luxurious diamond quilted coverlet made of organic linen. It is finished with a 1/2" flange and straight corners. Cotton fill.*

## SHAMS

BIG PILLOW WITH INSERT (28" x 36")  
AVAIL. IN CREAM, FLAX, MIDNIGHT, WHITE  
LARGE EURO (28" x 28")  
KING (20" x 36")  
STANDARD (20" x 26")  
PILLOW (14" x 24")  
NOT AVAIL. IN MIDNIGHT

## COVERLETS

KING (114" x 100")  
QUEEN (96" x 100")  
TWIN (68" x 94")



CREAM



FLAX



MIDNIGHT



OCEAN



SILVER



WHITE



# HUNTINGTON COLLECTION

*This versatile collection is made of 100% stonewashed cotton that offers year-round comfort and luxury.  
The Huntington features a diamond quilted pattern and 1/2" piping along the edges. 85% cotton/15% poly fill.*

**SHAMS** | LARGE EURO (28" x 28")

**COVERLETS** | KING (114" x 100")  
                              | QUEEN (96" x 100")



MIDNIGHT



NATURAL



SEA GLASS



TAUPE





## MARSEILLE COLLECTION

*Luxurious and elegant, the Marseille has a detailed floral and diamond quilted pattern on the front, made of 100% stonewashed cotton velvet. 85% cotton/15% poly fill.*

**SHAMS** | LARGE EURO (28" x 28")

**COVERLETS** | KING (114" x 100")  
QUEEN (96" x 100")



NAVY



TAUPE



WHITE



# OSLO COLLECTION

*The Oslo is a 100% stonewashed cotton coverlet collection. It features a geometric petal pattern that adds texture and dimension to any bed. Poly fill.*

**SHAMS** | LARGE EURO (28" x 28")

**COVERLETS** | KING (114" x 100")  
| QUEEN (96" x 100")

**COLORS** | BLUE DENIM  
| GREY DENIM







*Duvets*



## ALLEGRA COLLECTION

*Made of 100% organic linen, the luxurious Allegra collection is exquisite with its gorgeous embroidery that runs from top to bottom and is surrounded with a 1/2" flange. The duvets and shams feature shell button closures.*

### SHAMS

BOLSTER WITH INSERT (10" x 30")

EURO (26" x 26")

KING (20" x 36")

STANDARD (20" x 26")

PILLOW (14" x 24")

### DUVET COVERS

KING (104" x 90")

QUEEN (88" x 88")



CREAM



FLAX



OCEAN



SEA FOAM



SILVER



WHITE



# BLAIR COLLECTION

*This collection is youthful and casual with subtle frayed edges. Made of 100% stonewashed linen, the duvets and shams are finished with simple tie closures.*

**SHAMS** | EURO (26" x 26")  
KING (20" x 36")  
STANDARD (20" x 26")

**DUVET COVERS** | KING (104" x 90")  
QUEEN (88" x 88")



MIDNIGHT



OCEAN



TAUPE



WHITE



# CHARLIE COLLECTION

*Romantic simplicity at its finest. The charming 4" ruffle that surrounds both the duvet and shams make this collection a staple in any home. The Charlie collection features shell button closures and is made of 100% certified organic linen. Pillowcases also available.*

## SHAMS

BIG PILLOW WITH INSERT (28" x 36")

AVAIL. IN FLAX & WHITE

EURO (26" x 26")

KING (20" x 36")

STANDARD (20" x 26")

BODY PILLOW W/ INSERT (18" x 60")

AVAIL. IN FLAX & WHITE

PILLOW (14" x 24")

## DUVET COVERS

KING (104" x 90")

QUEEN (88" x 88")

TWIN (68" x 88")



CREAM



FLAX



OCEAN



SEA FOAM



SILVER



WHITE





## HARPER COLLECTION

*Soothing and serene, the Harper is a 100% linen collection that showcases bands of thin white stripes on a lovely blue chambray base. The duvets and shams are finished with simple tie closures.*

**SHAMS** | EURO (26" x 26")  
KING (20" x 36")  
STANDARD (20" x 26")

**DUVET COVERS** | KING (104" x 90")  
QUEEN (88" x 88")

**COLORS** | BLUE/WHITE



# JACKSON COLLECTION

*Both classic and modern, the Jackson collection features a series of stripes with relaxed, neutral colors that create a fresh and effortless look. The duvets and shams are made of 100% organic linen and feature shell button closures.*

**SHAMS** | EURO (26" x 26")  
KING (20" x 36")  
STANDARD (20" x 26")

**DUVET COVERS** | KING (104" x 90")  
QUEEN (88" x 88")



CREAM/GREY



FLAX/MIDNIGHT



WHITE/OCEAN



# LANA COLLECTION

*Understated and elegant, the Lana is a 100% stonewashed cotton collection with a dreamy and subtle peony design. Its duvets and shams are finished with tie closures.*

<b>SHAMS</b>	EURO (26" x 26")
	KING (20" x 36")
	STANDARD (20" x 26")

<b>DUVET COVERS</b>	KING (104" x 90")
	QUEEN (88" x 88")

<b>COLORS</b>	WHITE/TAUPE
---------------	-------------





## LAYLA COLLECTION

*This 100% stonewashed linen collection is exquisite in design. Charming with a contemporary feel, it features a lovely, embroidered eyelet pattern. Its duvets and shams are finished with tie closures. Pillowcases also available.*

**SHAMS** | EURO (26" x 26")  
KING (20" x 36")  
STANDARD (20" x 26")  
KING PILLOWCASES (20" x 36")  
ST/Q PILLOWCASES (20" x 28")

**DUVET COVERS** | KING (104" x 90")  
QUEEN (88" x 88")



MIDNIGHT



OCEAN



TAUPE



WHITE



# LOUWIE COLLECTION

*The tranquility of the 100% organic linen Louwie collection stems from its classic look. It has two 1/2" flanges running down the middle of the duvets and square shams. All other pillow shams have the 1/2" flange along their edge. Its duvets and shams feature shell button closures. Pillowcases also available.*

SHAMS	BOLSTER WITH INSERT (10" x 30")	DUVET COVERS	KING (104" x 90")
	EURO (26" x 26")		QUEEN (88" x 88")
	KING (20" x 36")		TWIN (68" x 88")
	STANDARD (20" x 26")		
	PILLOW (14" x 24")		



CREAM



FLAX



OCEAN



SILVER



WHITE



# MATHILDE COLLECTION

*A relaxed yet edgy look, this 100% organic linen collection features a 2 1/2" frayed ruffle with a 1/4" velvet ribbon trim all around. The duvets and shams are finished with button shell closures.*

**SHAMS** | EURO (26" x 26")  
KING (20" x 36")  
STANDARD (20" x 26")  
PILLOW (14" x 24")

**DUVET COVERS** | KING (104" x 90")  
QUEEN (88" x 88")  
TWIN (68" x 88")



CREAM



FLAX



OCEAN



SEA FOAM



SILVER



WHITE





## MAYA COLLECTION

*The Maya is a 100% linen collection that features a delicate paisley and floral print giving you a refreshing take on a classic pattern. The duvets and shams are finished with simple tie closures.*

**SHAMS** | EURO (26" x 26")  
KING (20" x 36")  
STANDARD (20" x 26")

**DUVET COVERS** | KING (104" x 90")  
QUEEN (88" x 88")

**COLORS** | WHITE/BLUE



# MONTAUK COLLECTION

*A simple and modern collection. The Montauk features a heavy weight 100% organic linen with a 1/2" flange and shell button closures. The duvets are backed with our regular weight organic linen.*

**SHAMS** | LARGE EURO (28" x 28")  
KING (20" x 36")  
STANDARD (20" x 26")

**DUVET COVERS** | KING (104" x 90")  
QUEEN (88" x 88")

**COLORS** | CREAM  
GREY STONE  
SEA FOAM



# SIENNA PAISLEY COLLECTION

*A vintage inspired print made of the softest 100% stonewashed cotton. This paisley collection is finished with a 1" flange and tie closures.*

**SHAMS** | EURO (26" x 26")  
| KING (20" x 36")  
| STANDARD (20" x 26")

**DUVET COVERS** | KING (104" x 90")  
| QUEEN (88" x 88")

**COLORS** | FOG  
| SEA GLASS





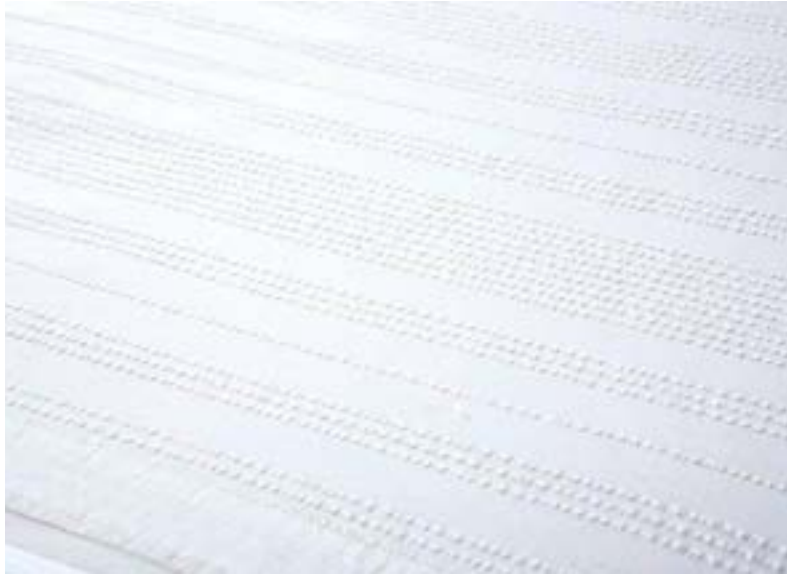
## QUINN COLLECTION

*A modern and textural collection, the Quinn features a striped seersucker pattern, creating an effortless and relaxed bed. While the shams have an envelope closure, the duvets feature shell buttons. Made of 100% stonewashed cotton.*

**SHAMS** | EURO (26" x 26")  
| KING (20" x 36")  
| STANDARD (20" x 26")

**DUVET COVERS** | KING (104" x 90")  
| QUEEN (88" x 88")

**COLORS** | GREY  
| WHITE





# BEDSKIRTS

18" Drop / Decking

**SIZES** | TWIN (39" x 75" x 18") | QUEEN (60" x 80" x 18") | KING (78" x 80" x 18") | CAL. KING (72" x 84" x 18")



**ANNABELLE**    
KING, QUEEN  
CREAM, FLAX  
GATHERED ONLY  
LINED  
100% LINEN VOILE DROP



**CAPRICE**    
KING, QUEEN  
PEARL  
HAND CUT LACE  
LINED  
100% LINEN DROP



**GATHERED LINEN**    
CAL. KING, KING  
QUEEN, TWIN  
CREAM, FLAX,  
WHITE  
NOT LINED  
100% LINEN DROP



**LINEN VOILE**    
CAL. KING, KING,  
QUEEN, TWIN  
CREAM, WHITE  
GATHERED ONLY  
LINED  
100% LINEN VOILE DROP



**PLEATED LINEN**    
KING, QUEEN, TWIN  
CREAM, FLAX, WHITE  
(TWIN AVAILABLE IN WHITE ONLY)  
NOT LINED  
100% LINEN DROP



**VINTAGE CROCHET**    
KING, QUEEN  
MIDNIGHT, WHITE  
HAND CROCHETED  
LINED  
100% COTTON DROP



# PILLOWCASES

**SIZES** | STANDARD/QUEEN (20" x 28") | KING (20" x 36")

*\*Sold in pairs*



## ANNABELLE



KING ONLY  
CREAM, FLAX  
100% LINEN

*Bed scarves also available.*



## CAPRICE



KING ONLY  
PEARL  
HAND CUT LACE  
100% LINEN



## CHARLIE



STANDARD/QUEEN, KING  
FLAX, WHITE  
100% LINEN



## COTTON SATEEN



STANDARD/QUEEN, KING  
WHITE/GREY STONE  
WHITE/OCEAN  
WHITE/TAUPE  
WHITE/WHITE  
100% EGYPTIAN COTTON  
320 THREAD COUNT



## LAYLA



STANDARD/QUEEN, KING  
MIDNIGHT, OCEAN,  
TAUPE, WHITE  
100% LINEN



## LOUWIE



STANDARD/QUEEN, KING  
CREAM, FLAX, WHITE  
100% LINEN



## VINTAGE CROCHET





STANDARD/QUEEN, KING  
MIDNIGHT, WHITE  
HAND CROCHETED  
100% LINEN  
W/ COTTON CROCHET



## FLAT SHEETS

**SIZES** | TWIN (71" x 100") | QUEEN (92" x 106") | KING (106" x 114")





**ANNABELLE**    
KING, QUEEN  
CREAM, FLAX  
100% LINEN



**CHARLIE**    
KING, QUEEN, TWIN  
PLAIN SHEET WITH 1/2"  
RUFFLE ON CUFF  
FLAX, WHITE  
100% LINEN



**LOUWIE**    
KING, QUEEN, TWIN  
PLAIN SHEET WITH  
3" FLANGE  
CREAM, FLAX  
WHITE  
100% LINEN



**VINTAGE CROCHET**     
KING, QUEEN  
MIDNIGHT, WHITE  
HAND CROCHETED  
100% LINEN  
W/ COTTON CROCHET

## FITTED SHEETS

**SIZES** | TWIN (39" x 75" x 15") | QUEEN (60" x 80" x 15") | KING (78" x 80" x 15") | CAL. KING (72" x 84" x 15")



CREAM  
FLAX  
WHITE  
100% LINEN

## SHEET SET

**SIZES** | TWIN (39" x 75" x 15") | QUEEN (60" x 80" x 15") | KING (78" x 80" x 15") | CAL. KING (72" x 84" x 15")



**COTTON SATEEN**  
WHITE/GREY STONE  
WHITE/OCEAN  
WHITE/TAUPE  
100% EGYPTIAN COTTON  
320 THREAD COUNT

# DUVET INSERTS

*Responsibly sourced feathers. Made in U.S.A.*

**SIZES** | TWIN (68" x 88") | QUEEN (92" x 96") | KING (106" x 96")



## ALL SEASON WEIGHT

*100% Cambric Cotton*

*10" Baffle Box*

*Fill: Polyester Down Alternative*

## SPRING & WINTER WEIGHT

*100% Cambric Cotton*

*10" Baffle Box*

*Fill: 600 Fill Power Premium White Duck Down*

*Hypoallergenic*

# PILLOW INSERTS

*100% White Cotton, Knife Edge, UltraClean Feathers™*

*Fill: 5% Down 95% Feather. Hypoallergenic. Made in U.S.A.*



## SIZES

BIG PILLOW (28" x 36")

LARGE EURO (28" x 28")

EURO (26" x 26")

KING (20" x 36")

STANDARD (20" x 26")

PILLOW (22" x 22")

PILLOW (20" x 20")

DECO (18" x 18")

PILLOW (14" x 24")

BOUDOIR (12" x 16")

BOLSTER (10" x 30")

BODY PILLOW (18" x 60")

A wicker basket sits on a wooden floor, filled with folded throws in shades of beige, dark grey, and white. A large, light-colored linen pillow leans against the back of the basket. The scene is set in a bright room with a window in the background showing greenery outside. A small potted plant is visible to the right. The text "Throws & Pillows" is written in a white, elegant script font across the bottom of the image.

# *Throws & Pillows*



## CARMEL OVERSIZED THROWS

*This oversized lightweight throw offers subtle texture details in the open weaving and frayed edges. The Carmel is a versatile, relaxed design. 100% Linen.*

THROW | (60" x 90")



COLORS | MIDNIGHT  
WHITE  
TAUPE



## EVA THROWS

*Soft and lush with the perfect amount of sumptuous fluff, the Eva throw makes for great layering. 100% Polyester.*

THROW | (50" x 60")



COLORS | SAND  
WINTER WHITE



## MALIBU THROWS & PILLOWS

*This comfortable cable-knit throw is handmade from a wool/acrylic blend. It complements any bed or sofa beautifully.*

**THROW** | (50" x 60")

**COLORS** | ANTIQUE WHITE  
OCEAN  
PEWTER



**SHAMS** | LARGE EURO (28" x 28")  
(AVAIL. IN OCEAN & PEWTER ONLY)



## MANHATTAN THROWS & PILLOWS

*This handmade, cable-knit throw brings warmth to any room of the house. Wool/Acrylic.*

**THROW** | (50" x 60")

**COLORS** | OYSTER  
SLATE



**SHAMS** | LARGE EURO (28" x 28")  
(AVAIL. IN SLATE ONLY)





## MONTAUK THROWS & PILLOWS

*The heavy weight linen used to make this casual throw, makes it great for a cool summer night. This hand loomed collection is finished with a knotted fray. 100% Linen.*

### SHAMS

LARGE EURO (28" x 28")  
BIG PILLOW W/ INSERT  
(28" x 36")  
ONLY AVAIL. IN INDIGO,  
NATURAL, & WHITE



### THROW | (50" x 60")

### COLORS

INDIGO  
CREAM  
OCEAN  
WHITE  
ROSE  
NATURAL



## MORGAN OVERSIZED THROWS

*Soft to the touch, the Morgan throw features a color block design finished with simple tassels. This oversized throw delivers both coziness and warmth. 100% Acrylic.*

### THROW | (60" x 90")

### COLORS

GREY/CREAM  
OLIVE/SEA GLASS



## POM POM THROWS & TEDDY PILLOWS

*This gorgeous throw, with its pom pom accents on two sides, is a fun addition to any room. 100% Polyester.*

**THROW** | (50" x 60")

**SHAMS** | PILLOW (14" x 24")

**COLORS**

PEWTER  
CREAM PINK  
WHITE  
FOG  
BARELY BLUE



## SVEN OVERSIZED THROW

*Nestle into this chunky and lavish throw, the perfect lounging companion. It is knitted with a mix of grey and white yarns, creating a beautiful heather grey color. 100% Acrylic.*

**THROW** | (60" x 90")

**COLORS** | HEATHER GREY



## TRESTLES OVERSIZED THROWS

*Indulge in this oversized cable-knit throw complemented with a tassel design. This is the perfect throw to wrap yourself with or dress at the foot of the bed. 100% Acrylic.*

THROW | (60" x 90")

COLORS | ANTIQUE WHITE  
MIDNIGHT



## TULA OVERSIZED THROW

*The faux sheepskin texture of the Tula throw makes it the most plush, soft, and luxurious addition to any room. 100% Polyester.*

THROW | (60" x 90")

COLORS | WHITE



## VENICE OVERSIZED THROWS

*Relax and cozy up in the Venice which offers year round comfort. A lightweight 100% linen throw that features an exquisite deep waffle texture and finished with subtle frayed edges.*

THROW | (60" x 90")

COLORS

CAYENNE  
DUSTY BLUE  
MIDNIGHT  
NAVY  
OCEAN  
TAUPE



## DECORATIVE PILLOWS

*Pillow inserts sold separately.*

LOVE & PEACE (20" x 26") 



FLAX \*SOLD AS SET



# DECORATIVE PILLOWS

*Pillow inserts sold separately.*

HUDSON    (22" x 22")



SEA FOAM



CREAM



CHOCOLATE



GREY STONE



NATURAL

MARINA    (22" x 22")



NATURAL

ANNABELLE   (14" x 24")



CREAM



FLAX

GWEN    (22" x 22")



NAVY



NATURAL

VINTAGE CROCHET    (14" x 24")



WHITE



MIDNIGHT

DRAPER    (22" x 22")



NATURAL



NAVY





*Window*

# CURTAINS

(42" x 96")

## ANNABELLE



(54" x 96")

100% LINEN VOILE  
NOT LINED



FLAX



CREAM

## CLASSICA



100% LINEN VOILE  
NOT LINED



NATURAL

## OLIVIA



100% COTTON VOILE  
NOT LINED



MIDNIGHT



OCEAN



WHITE

## MATHILDE



100% LINEN  
LINED



WHITE

# CURTAINS

(42" x 96")

## TIE TOP



100% LINEN  
NOT LINED



FLAX



CREAM



GREY STONE



OCEAN



SEA FOAM



SILVER



WHITE

## SMOCKED



100% LINEN  
NOT LINED



CREAM



FLAX



OCEAN



PINK



WHITE

# CURTAINS

(42" x 96")

## LINEN VOILE TIE TOP



100% LINEN VOILE  
NOT LINED



CREAM



FLAX



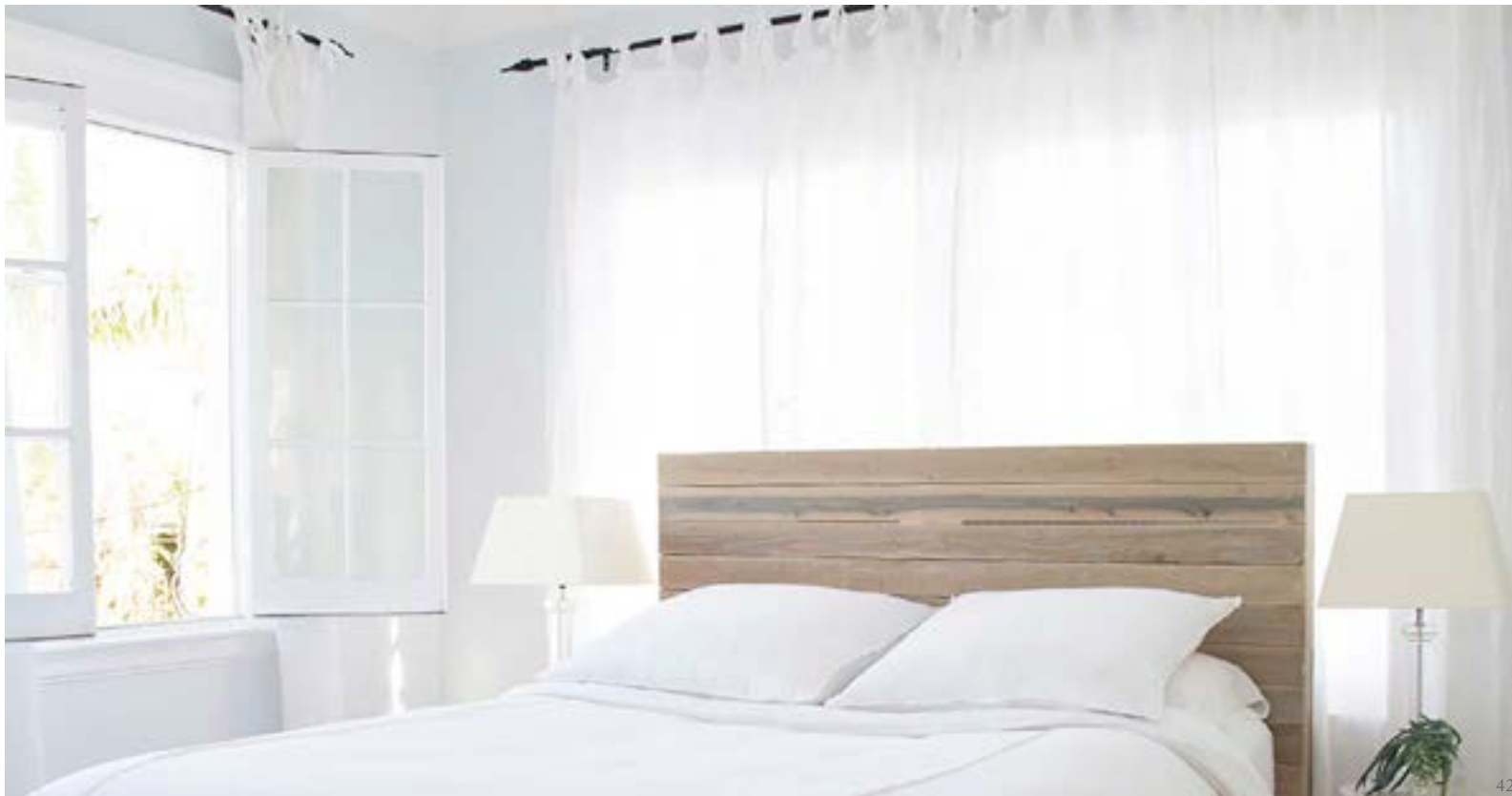
OCEAN



SEA FOAM



WHITE





# TABLECLOTHS

*SMALL (69" x 69")*  
*MEDIUM (69" x 108")*  
*LARGE (69" x 128")*



OFF-WHITE/GREY



NATURAL/GREY

## BISTRO



*Grey Checkered*  
*100% Linen*



NATURAL



WHITE

## LILY



*Linen Voile with*  
*a 4" Ruffle*  
*100% Linen*



OCEAN



SLATE



WHITE



FLAX

## OLIVIER



*Frayed Edge*  
*100% Linen*



FLAX

## SEAT COVER



*4" Ruffle*  
*100% Linen*  
*(24" X 22")*



WHITE

# RUNNERS

(21" X 59") SET OF 2



OFF-WHITE/GREY

## BISTRO STRIPE



*Solid Grey Stripe Accents*  
100% Linen  
(21" X 59")  
SET OF 2



CREAM

## JULES



*Fringe Edge*  
100% Linen  
(21" X 59")  
SET OF 2



SLATE



SLATE

## OLIVIER



*Frayed Edge*  
100% Linen



OCEAN



BARK



WHITE



# PLACEMATS

(13" x 19") Set of 4

## CHARLIE



1/2" Ruffle, 100% Linen

NATURAL, WHITE



NATURAL



WHITE

## HAMPTON



Diamond Quilted Pattern, 100% Stone Washed Cotton Velvet. Poly fill.



BORDEAUX



BEIGE



CAYENNE



HUNTER  
GREEN



NAVY



WALNUT



WHITE

## CHLOE



Open Lace Detail, 100% Cotton



TAUPE

## JULIET



Quilted with Small Leaf Details, 100% Stone Washed Cotton Velvet. Poly fill.



PEWTER



LILAC



TAUPE

## LILY



1" Ruffle, 100% Linen



NATURAL



WHITE

# NAPKINS

(21" x 21") Set of 4.

## BISTRO



*Border, Checker or Stripe, 100% Linen*  
NATURAL/GREY, OFF-WHITE/GREY



## BON APPETIT



*Grey Embroidery, 100% Linen*  
WHITE, FLAX



## CARMEL



*Frayed edges, 100% Linen*  
TAUPE, WHITE, NAVY, MIDNIGHT,  
DUSTY BLUE, CAYENNE



## CHARLIE



*1/2" Ruffle, 100% Linen*  
BLUE, NATURAL, PEARL, WHITE,  
PINK



## JULES



*Fringe Edge, 100% Linen*  
CREAM, SLATE



## LILY



*1" Ruffle, 100% Linen*  
NATURAL, WHITE



## OLIVIER



*Frayed Edge, 100% Linen*

SLATE, WHITE, OCEAN, BARK



## WINDSOR



*Embroidery on One Corner, 100% Linen*

PEWTER, BORDEAUX, TAUPE, BEIGE, WHITE,  
CAYENNE, WALNUT, HUNTER GREEN, LILAC



## SILVER NAPKIN RINGS

*Set of 4*

## VICTORIAN NAPKIN RINGS

SQUARE



OVAL



OVAL



## CHATEAU NAPKIN RINGS

ROUND





Bath

# SHOWER CURTAINS

*All curtains are (72" x 72") with 12 holes for hooks.*

## CAPRICE



*Ornate embroidery with beautiful lace and netting detail.*

AQUA, WHITE  
100% COTTON



## CLASSICA



*Center embroidery on a linen valance with pleats.*

WHITE  
100% COTTON



## LANA



*Dreamy and subtle peony design.*

WHITE/TAUPE  
100% COTTON



## QUINN



*Relaxed striped seersucker detail.*

WHITE  
100% COTTON



## VINTAGE CROCHET



*Beautiful hand crocheted hammock valance.*

WHITE  
100% COTTON



## SHOWER HOOKS

*Set of 12. Liner Included.*

### SILVER CREST



### WHITE ROSE





Seamless

## ABSTRACT

*Acrylic/Nylon/Wool blend*



NAVY



RED

## VINTAGE WASHED

*Viscose/Poly blend*



DARK GREY



LIGHT GREY

## RIBBON



*Linen/Cotton blend*



NAVY

## ANTLER

*Viscose/Acrylic blend*



BEIGE



CHARCOAL



OLIVE

## DAISY

*Viscose/Poly blend*



FRENCH BLUE

## VINTAGE FLORAL



*100% Linen*



AQUA



ROSE

## VINE

*Viscose/Poly blend*



LIGHT GREY

## SPECKLED

*Acrylic/Nylon blend*



BLACK



NAVY

## GLIMMER

*Poly/Acrylic/Viscose/Wool/Lurex*



SILVER

## GRID

*Viscose/Poly blend*



LIGHT GREY



NAVY

## SPACE DYED

*Viscose/Poly blend*



FRENCH BLUE



TAUPE

## RUNNING STITCH

*Poly*



BLACK



TAUPE

## OMBRE

*Viscose*



WHITE/BLUSH



WHITE/SAGE



WHITE/STEEL



## POLKA DOT

*Viscose/Poly blend*



LIGHT GREY



DARK GREY

## LIGHTWEIGHT FRAYED

*Viscose/Acrylic blend*



AQUA



BLUSH



FRENCH BLUE



GREY



LIGHT GREY



LIGHT ROSE



NAVY



OLIVE



SAND



SALMON





2979 North Ontario St. Burbank, CA 91504  
p: 818.847.0150 f: 323.938.1820 e: [info@pompomathome.com](mailto:info@pompomathome.com)

[www.PomPomAtHome.com](http://www.PomPomAtHome.com)