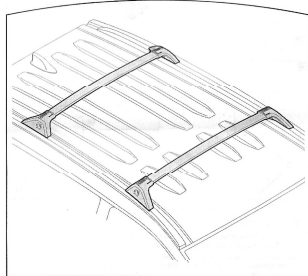
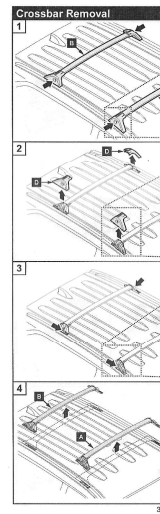
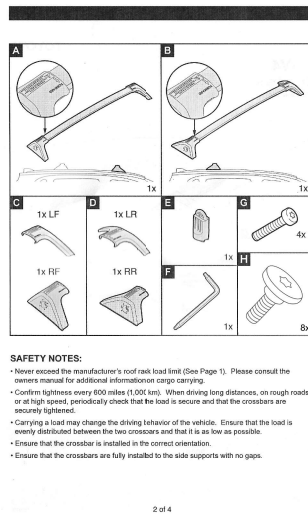


**INSTALLATION MANUAL OF CROSS BAR
FOR 2019+ RAV4 fitting for flush roof rails**



Model year: 2019+
Maximum System Load Capacity: 73 kg (160 lbs) total evenly distributed
36.5 kg (80 lbs) per cross bar



ASSEMBLY DIAGRAM OF 2019 RAV4 CROSSBAR PARTS

