

PRODUCT DATA BOOK
SPRING SUMMER 2021



MATERIAL



① スエードライナー

柔らかなスエードは足当たりがよく、足裏の汗を吸収します。

② ジュート

通気性と吸湿性にすぐれた麻の素材でフットベッドの湿度を調節し、安定感が向上します。

③ コルク&ラテックス

高品質な天然のコルクとラテックスを独自の技術で配合。
耐久性と弾力を併せ持ち、高い快適性を持ったフットベッドの基礎部分です。
天然コルクが履くほど足になじみます。

④ ジュート

目の粗いジュートを挟むことで安定感が向上し、強度も高くなります。

⑤ クッション(ソフトフットベッドのみ)

ラテックスのクッション材が衝撃を吸収し、よりやわらかな履き心地です。

Size Chart

MEN'S/LADIES'

size	35		36		37		38		39		40		41		42		43		44		45		46	
cm	22.5	23	23.5	24	24.5	25	25.5	26	26.5	27	27.5	28	28.5	29	30	30.5	31	31.5	32	32.5	33	33.5	34	34.5

KIDS

size	24	25	26	27	28	29	30	31	32	33	34
cm	15	16	16.5	17	18	18.5	19	20	20.5	21	22



足 ク ッ ッ

足



ッ ッ クッ



ッ



ッ



ッ

SPRING SUMMER 2021

Inhalt/Index

BIRKENSTOCK®

	Theme	Gender	Page
CLASSIC	BIG BUCKLE	WOMEN	08
	OILED LEATHER D-BUCKLE	WOMEN	09
	SHINY PYTHON	WOMEN	10
	OILED LEATHER	WOMEN	10
	ETHNO RHOMBS VEGAN	WOMEN	11
	WATERCOLOR FLOWER VEGAN	WOMEN	11
	EARTHY VEGAN	WOMEN / UNISEX	12
	BIRKO-FLOR METALLIC	WOMEN	13
	NUBUCK BIG BUCKLE	WOMEN	14
	SOFT NUBUCK	WOMEN	15
	SOFT NUBUCK SPLIT		18
	NUBUCK BIG BUCKLE	WOMEN	19
	SUEDE	WOMEN	20
	ICY METALLIC	WOMEN	21
	GRACEFUL BIG BUCKLE	WOMEN	22
	GRACEFUL	WOMEN	23
	PATENT	WOMEN	24
	NOMAD LEATHER	MEN	26
	DESERT BUCK	MEN	27
	DESERT SOIL	MEN	28
	DESERT SUEDE	MEN	29
	VINTAGE WOOD	MEN	30
	SADDLE MATT	MEN	31
	OILED LEATHER	UNISEX	32
	SMOOTH LEATHER	UNISEX	35
	BIRKO-FLOR	UNISEX	36
	SUEDE	UNISEX	38
	BIRKIBUC	UNISEX	40
	COZY HOME	UNISEX	42
	WOOLY HOME	UNISEX	42
	EXQUISITE	UNISEX	44
	SUEDE EXQUISITE	UNISEX	45
	MONO CROC	UNISEX	46
	BF TRIPLES	UNISEX	47
	PATENT	UNISEX	48
	METALLICS	WOMEN	49
	SPORT TECH	UNISEX	52
	ICONS REINTERPRETED	UNISEX	52
	TREND PRINTS & COLORS	UNISEX	53
	ARTIC OLD	UNISEX	56
	DESERT SOIL	MEN	57
	BIRKIBUC	WOMEN	58
	ADVENTURE CROSSCOUNTRY	WOMEN & MEN	59
	BASICS	UNISEX	60
	TO THE BEACH	UNISEX	62
	TO THE GYM	UNISEX	64
	BIRKIBUC	BOYS	70
DESERT SOIL CAMO	BOYS	71	
WATERCOLOR FLOWER VEGAN	GIRLS	72	
VEGAN FLOWERS	GIRLS	72	
BIRKO-FLOR	BOYS	74	
UNICORN	GIRLS	75	
UNICORN FOOTBED	GIRLS	75	
ELECTRIC METALLIC	GIRLS	76	
COSMIC SPARKLE	GIRLS	77	
DESERT SOIL	BOYS	78	
FUN PRINT	BOYS	79	
BASICS	GIRLS & BOYS	80	
TO THE PLAYGROUND	GIRLS & BOYS	82	

	Theme	Gender	Page
SHOES	CUPSOLE/CANVAS	UNISEX	88
	CUPSOLE/SMOOTH LEATHER	UNISEX	89
	CUPSOLE/SUEDE	UNISEX	90
	DIRECT MOC/SUEDE	WOMEN	91
	EVA-CORK/SUPER SOFT NUBUCK	WOMEN	92
	EVA-CORK/SMOOTH LEATHER	WOMEN	92
	HERITAGE/OILED LEATHER	UNISEX	93
	HERITAGE/SUEDE	UNISEX	94
	HERITAGE/OILED LEATHER/SUEDE	UNISEX	94
	STRIDE/SUEDE	MEN	95
PAPILIO	STRIDE/SMOOTH LEATHER	WOMEN	95
	ACE WALK/GRAINED LEATHER	MEN	96
	BUSINESS/SMOOTH LEATHER	MEN	97
	BUSINESS/SUPER SOFT SMOOTH LEATHER	WOMEN	98
	PURE LEATHER	WOMEN	104
	NUBUCK	WOMEN	106
	TEXTURE MIX	WOMEN	108
	NUBUCK	WOMEN	108
	PLATFORM VEGAN	WOMEN	109
	CHUNKY SUEDE	WOMEN	109
LEGWEAR	LEATHER METALLIC	WOMEN	110
	COTTON SOLE	WOMEN	114
	COTTON SOLE SNEAKER 277	WOMEN & MEN	115
	COTTON SOLE INVISIBLE	WOMEN & MEN	116
	COTTON SPLIT	WOMEN	117
	SUPPORT SOLE	WOMEN & MEN	118
	COTTON SLUB	WOMEN	119
	COTTON TWIST	WOMEN	119
	COTTON SOLE	MEN	120
	COTTON SLUB	MEN	121
BAGS BELTS	COTTON TWIST	MEN	121
	TWIST HSH	BOYS	122
	SLUB BLOCK	BOYS	122
	TWIST HSH	GIRLS	123
	SLUB BLOCK	GIRLS	123
	STRUCTURED DOT	WOMEN	124
	LINEN ETHNO	WOMEN & MEN	125
	STRUCTURED SLUB	MEN	126
	SILKY SLUB MEN	MEN & WOMEN	127
	KANSAS	UNISEX	130
KANSAS BIG BUCKLE	WOMEN	130	
MONACO	UNISEX	134	
ZURICH	UNISEX	134	
VIENNA	UNISEX	135	
HANOVER	UNISEX	135	
BERLIN	UNISEX	136	
FLORENCE	WOMEN	136	
OSLO	UNISEX	137	
COLOGNE	UNISEX	137	



CLASSIC AUTHENTIC SPRING SUMMER 2021

Each season, „Classic“ defines the largest of the BIRKENSTOCK collections. In light of the brand's historic tradition and impressive design legacy, perennial looks are to be expected. However, the sheer range of this group also testifies to the adaptability and timelessness of these iconic models.

Names like Madrid, Gizeh and Arizona are known the world over. Brand disciples can recognize the anatomically shaped footbed blindfolded just by slipping their feet into the sandals or shoes. BIRKENSTOCK stands for both a healthy foot position and a comfortable posture. And the German hallmark brand has been addressing matters like sustainability for decades – by making products that last and creating enduringly appealing designs. The bottom line: every single Classic model is designed to be worn and loved for a long time – a lifetime.



CLASSIC AUTHENTIC SPRING SUMMER 2021

At BIRKENSTOCK, leather, Birko-Flor, EVA soles, and our anatomically shaped cork/latex footbed are the ingredients for iconic designs. While this recipe may sound straightforward, the in-house creative team excels at coming up with endless variations. For Spring/Summer 2021, a single phrase sufficed to lend BIRKENSTOCK Classics – many of which have already enjoyed half a century of success.

Bohemian is currently a leading ontrend theme at BIRKENSTOCK. And the designs produced by this idea are so fresh and full of zest that many fans are destined to become collectors. The BIRKENSTOCK story is one of style, culture and responsibility – concepts that drive the vegan models as well.

**WOMEN
BIG BUCKLE**

BIRKENSTOCK®

★ MARKET HIGHLIGHT



S 1011073 | 35-43 | 22,000 JPY
ARIZONA BIG BUCKLE | BLACK | OILED LEATHER
BETTER



0
1018745 | 35-43 | 20,000 JPY
GIZEH BIG BUCKLE | COGNAC | S
BETTER



S 1011073 | 35-43 | 22,000 JPY
ARIZONA BIG BUCKLE | COGNAC | OILED LEATHER
BETTER



S 1006523 | 35-43 | 17,000 JPY
MADRID BIG BUCKLE | BLACK | OILED LEATHER
BETTER



S 1006525 | 35-43 | 17,000 JPY
MADRID BIG BUCKLE | COGNAC | OILED LEATHER
BETTER



0
S 1018866 | 35-43 | 17,000 JPY
MADRID BIG BUCKLE | WHITE | GRAINED LEATHER
BETTER



★ MARKET HIGHLIGHT

0
1018753 | 35-43 | 20,000 JPY
GIZEH BIG BUCKLE | BLACK | SMOOTH LEATHER
BETTER



0
1018885 | 35-43 | 20,000 JPY
GIZEH BIG BUCKLE | WHITE | GRAINED LEATHER
BETTER

**WOMEN
BIG BUCKLE**

- **Models** Arizona Big Buckle, Gizeh Big Buckle and Madrid Big Buckle.
- **Upper Material** Oiled Leather/ Smooth Leather .
- **Footbed** Color matching, smooth Piumato-leather-covered cork-latex footbed.
- **Outsole** EVA.
- **Buckle** Shiny metal Big Buckle.
- **Newness** New model: Gizeh Big Buckle.

SPRING SUMMER 2021

CLASSIC | AUTHENTIC



S 101756 | 35-43 | 21,000
FRANCA | COGNAC | OILED LEATHER
BETT

S 1017566 | 35-43 | 21,000
FRANCA | BLACK | OILED LEATHER
BETT

WOMEN
OILED LEATHER D-BUCKLE

- **Model** Franca D-Buckle.
- **Upper Material** Oiled Leather.
- **Footbed** Color matching, smooth Piumato-leather-covered cork-latex footbed.
- **Outsole** EVA.
- **Buckle/Closure** D-Buckle.



0
 S 1019372 | 35-43 | 12,0
 ARIZONA | SHINY PYTHON BLACK/EGG
 GOLD

WOMEN
SHINY PYTHON

- Model: **Arizona**
- Upper Material: **Shiny microfibre with snake optic..**
- Footbed: **Anatomically shaped suede-covered cork-latex footbed.**
- Outsole: **EVA**
- Buckle/Closure: **standard buckle**
- Newness: **On trend printed snake effect microfibre with golden shimmer.**

0
 S 1019374 | 35-43 | 12,0
 ARIZONA | SHINY PYTHON EGGSHELL/
 GOLD



00
 S 1019387 | 35-43 | 16,0
 MAYA | LAVENDER BLUSH/SHO
 BETT

00
 S 1019388 | 35-43 | 16,0
 MAYA | OCHRE/EGG GOLD/
 BETT

WOMEN
OILED LEATHER

- Model: **Arizona, Mayari.**
- Upper Material: **Oiled leather.**
- Footbed: **cork-latex footbed with printed microfibre lining.**
- Outsole: **EVA.**
- Buckle/Closure: **standard buckle.**
- Newness: **Printed microfibre footbed with a new seasonal print.**

0
 S 1019387 | 35-46 | 16,0
 S 1019390 | 35-46 | 16,0
 ARIZONA | LAVENDER BLUSH
 BETTER



1019630 | 35-43 | 12,000 JPY
YAO BALANCE | ETHNO MOCH
GOOD

WOMEN ETHNO RHOMBS VEGAN



1018736 | 35-43 | 12,000 JPY
FLORIDA FRESH | ETHNO MOCH
GOOD

- Model: Florida Fresh, Yao Balance, Maya
- Upper Material: Birko-Flor with digital print
- Footbed: Anatomically shaped cork-latex Footbed with vegan microfibre lining
- Outsole: EVA
- Buckle/Closure: Standard Buckle
- Newness: New print with bohemian-inspired design
- Additional Features: Vegan



1019402 | 35-43 | 12,000 JPY
MAYA RI | ETHNO MOCHA | BIRKO-FLOR
GOOD



1018448 | 35-43 | 12,000 JPY
SYDNEY | WATERCOLOR FLOWER NAVY | BIRKO-FLOR
GOOD



1018603 | 35-43 | 12,000 JPY
SYDNEY | WATERCOLOR FLOWER WHITE | BIRKO-FLOR
GOOD

WOMEN WATERCOLOR FLOWER VEGAN

- Model: Sydney, Cizen
- Upper Material: Birko-Flor and PU
- Footbed: Anatomically shaped cork-latex footbed with vegan microfibre lining
- Outsole: EVA
- Buckle/Closure: Standard buckle
- Additional Features: The watercolour flower print was handpainted by our in house designers.



1018596 | 35-43 | 12,000 JPY
SYDNEY | WATERCOLOR FLOWER NAVY | BIRKO-FLOR
GOOD



1018466 | 35-43 | 12,000 JPY
CIZEN | WATERCOLOR FLOWER WHITE | BIRKO-FLOR
GOOD

WOMEN
EARTHY VEGAN

BIRKENSTOCK®



00

S 1018489 | 35-43 | 10,500 JPY
YAO BALANCE | EARTHY VEGAN LIGHT ROSE | BIRKO-FLOR GOOD

0

S 1018566 | 35-43 | 8,500 JPY
MADR | EARTHY VEGAN FADED KHAKI | BIRKIBUC GOOD



0

S 1019653 | 35-43 | 8,500 JPY
MADR | EARTHY VEGAN LATTE CREAM | BIRKO-FLOR GOOD



0

S 1018486 | 35-43 | 10,500 JPY
MAYARI | EARTHY VEGAN FADED KHAKI | BIRKO-FLOR GOOD



0

S 1018488 | 35-43 | 10,500 JPY
BIRIMAYARI | EARTHY VEGAN LIGHT ROSE | BIRKO-FLOR GOOD



S 1019595 | 35-43 | 10,500 JPY
YAO BALANCE | EARTHY VEGAN FADED RUST | BIRKO-FLOR GOOD



0

S 1019077 | 35-46 | 10,500 JPY
ARIZONA | FADED RUST VEG | BIRKIBUC GOOD



0

S 1019435 | 35-43 | 10,500 JPY
FLORIDA FRESH | LATTE CREAM VEG | BIRKIBUC GOOD

WOMEN / UNISEX
EARTHY VEGAN

- **Models** Arizona, Mayari, Gizeh, Madrid, Yao Balance, Florida.
- **Upper Material** Vegan Birko-Flor.
- **Footbed** Anatomically shaped cork-latex footbed with vegan microfibre lining.
- **Outsole** EVA.
- **Buckle/Closure** Standard buckle.
- **Newness** New Birko-Flor material with grained surface.
- **Additional Features** Vegan.



0

S 1019239 | 35-46 | 10,500 JPY
MAYARI | LATTE CREAM VEG | BIRKIBUC GOOD

SPRING SUMMER 2021

CLASSIC | AUTHENTIC

WOMEN
BIRKO-FLOR METALLIC

BIRKENSTOCK®



S 101226 | 35-43 | 9,500 JPY
ARIZONA | SILVER | BIRKO-FLOR
GOOD



S 1018886 | 35-43 | 9,500 JPY
FRANCA | GOLD | BIRKO-FLOR
GOOD



S 1016111 | 35-43 | 9,500 JPY
ARIZONA | GOLD | BIRKO-FLOR
GOOD



N 1016108 | 35-43 | 9,500 JPY
GIZEH | GOLD | BIRKO-FLOR
GOOD



N 43851 | 35-43 | 9,500 JPY
GIZEH | SILVER | BIRKO-FLOR
GOOD



S 1016107 | 35-43 | 7,500 JPY
MADRID | GOLD | BIRKO-FLOR
GOOD



S 40413 | 35-43 | 7,500 JPY
MADRID | SILVER | BIRKO-FLOR
GOOD



S 1018868 | 35-43 | 9,500 JPY
FRANCA | SILVER | BIRKO-FLOR
GOOD



S 1018867 | 35-43 | 12,000 JPY
BLANCA | SILVER | BIRKO-FLOR
GOOD

WOMEN
BIRKO-FLOR METALLIC

- **Model:** Arizona, Gizeh, Madrid, Franca, Blanca.
- **Upper Material:** Birko-Flor Metallic.
- **Footbed:** Anatomically shaped suede-covered cork-latex footbed.
- **Outsole:** EVA.
- **Buckle/Closure:** Standard buckle.

SPRING SUMMER 2021

CLASSIC | AUTHENTIC

★ MARKET HIGHLIGHT



0

1018446 | 35-43 | 18,000 JPY
GIZEH BIG BUCKLE | ALMOND | NUBUCK
BETTER

0

1018726 | 35-43 | 15,000 JPY
MADRID BIG BUCKLE | MUD GREEN | NUBUCK
BETTER

★ MARKET HIGHLIGHT



0

1018861 | 35-43 | 21,000 JPY
ARIZONA BIG BUCKLE | ALMOND | NUBUCK
BETTER



0

1018698 | 35-43 | 15,000 JPY
MADRID BIG BUCKLE | ALMOND | NUBUCK
BETTER



0

1018406 | 35-43 | 18,000 JPY
GIZEH BIG BUCKLE | MUD GREEN | NUBUCK
BETTER

**WOMEN
NUBUCK BIG BUCKLE**

- **Models** Arizona Big Buckle, Gizeh Big Buckle, Madrid Big Buckle.
- **Upper Material** nubuck.
- **Footbed** anatomically shaped, cork-latex footbed with tonal colored suede lining.
- **Outsole** EVA.
- **Buckle/Closure** Printed Big Buckle.
- **Newness** New model Gizeh Big Buckle and our new printed buckle technology.

**WOMEN
SOFT NUBUCK**

BIRKENSTOCK®

SOFT FOOTBED

SOFT FOOTBED



0

S 1018788 | 35-43 | 16,000 JPY
GRANADA SFB | PECAN | NUBUCK
BETTER

0

S 1018771 | 35-43 | 15,000 JPY
FLORIDA FRESH SFB | SANDALWOOD
BETTER

SOFT FOOTBED



0

S 1018998 | 35-43 | 15,000 JPY
ARIZONA SFB | FADED KHAKI | NUBUCK
BETTER

SOFT FOOTBED



0

S 1019042 | 35-43 | 15,000 JPY
ARIZONA SFB | PECAN | NUBUCK
BETTER

SOFT FOOTBED



0

S 1018819 | 35-43 | 15,000 JPY
FLORIDA FRESH SFB | FADED KHAKI | NUBUCK
BETTER

SOFT FOOTBED



0

S 1018832 | 35-43 | 16,000 JPY
GRANADA SFB | FADED KHAKI | NUBUCK
BETTER

**WOMEN
SOFT NUBUCK**

- **Models** Arizona, Florida Fresh, Granada.
- **Upper Material** nubuck.
- **Footbed** anatomically shaped suede-covered cork-latex soft footbed.
- **Outsole** EVA.
- **Buckle/Closure** Standard Buckle.



CLASSIC INSPIRED SPRING SUMMER 2021

Our in-house designers are continually challenging themselves to draw from new inspiration. Classic models may always form the foundation while we look to add a fresh perspective to new designs and styles.

We have an ambition to appeal to new target groups with options that have a youthful design code. Manifestations of themes like a soft nubuck leather or a metallic suede slot seamlessly into the BIRKENSTOCK Collection. And pairing these modern moods with classic made-in-Germany quality makes for footwear that is truly unique.



★ MARKET HIGHLIGHT

★ MARKET HIGHLIGHT

0

1019398 | 35-43 | 20,500 JPY
1019414 | 35-43 | 20,500 JPY
ARIZONA SPLIT | MINERAL / LIGHT ROSE | NUBUCK
BETT

0

1019421 | 35-43 | 20,500 JPY
1019422 | 35-43 | 20,500 JPY
ARIZONA SPLIT | SANDCASTLE / FADED KHAKI | NUBUCK
BETT

SPRING SUMMER 2021

CLASSIC | INSPIRED

SOFT NUBUCK SPLIT

- **Model** Arizona Split.
- **Upper Material** Nubuck in color combination..
- **Footbed** Color matching, smooth Piumato-leather-covered cork-latex footbed.
- **Outsole** EVA.
- **Buckle/Closure** Textured, Fabric feel buckles in matching colors to the straps.
- **Newness** Fabric Feel buckle; Arizona Split model.

★ MARKET HIGHLIGHT



0

1018763 | 35-43 | 18,000 JPY
GIZEH BIG BUCKLE | FUCHSIA TULIP | NUBUCK
BETTER

0

1018723 | 35-43 | 15,000 JPY
MADRID BIG BUCKLE | FUCHSIA TULIP | NUBUCK
BETTER

★ MARKET HIGHLIGHT



0

1018765 | 35-43 | 18,000 JPY
GIZEH BIG BUCKLE | APRICOT | NUBUCK
BETTER



0

1018727 | 35-43 | 15,000 JPY
MADRID BIG BUCKLE | APRICOT | NUBUCK
BETTER

**WOMEN
NUBUCK BIG BUCKLE**

- **Models** Gizeh Big Buckle, Madrid Big Buckle.
- **Upper Material** Nubuck.
- **Footbed** Anatomically shaped cork-latex footbed with colored suede lining.
- **Outsole** EVA.
- **Buckle/Closure** Big Buckle.
- **Newness** Tonal suede footbed lining matching to upper material color; New Gizeh Big Buckle.



00

S 1019592 | 35-43 | 15,000 JPY
TULUM SFB | LATTE CREAM | SUEDE LEATHER
BETTER

S 1015892 | 35-43 | 14,000 JPY
ARIZONA SFB | LIGHT ROSE | SUEDE LEATHER
BETTER



0

S 1019621 | 35-43 | 15,000 JPY
TULUM SFB | MINK | SUEDE LEATHER
BETTER



S 1015896 | 35-43 | 15,000 JPY
TULUM SFB | LIGHT ROSE | SUEDE LEATHER
BETTER



S 1016393 | 35-43 | 14,000 JPY
ARIZONA SFB | LIGHT BLUE | SUEDE LEATHER
BETTER

**WOMEN
SUEDE**

- Model: Tulum, Arizona.
- Upper Material: Suede in feminine colorways.
- Footbed: Anatomically shaped suede-covered cork-latex soft footbed.
- Outsole: EVA.
- Buckle/Closure: Standard buckle.

WOMEN
ICY METALLIC

BIRKENSTOCK®



0

1019739 | 35-43 | 10,500 JPY
MAYARI | ICY METALLIC POPPY | BIRKO-FLO
GOOD

1014286 | 35-43 | 10,500 JPY
ARIZONA | ICY METALLIC STONE GOLD | BIRKO-FLO
GOOD



0

1019189 | 35-43 | 10,500 JPY
MAYARI | ICY METALLIC STONE GOLD | BIRKO-FLO
GOOD



0

1019349 | 35-43 | 10,500 JPY
ARIZONA | ICY METALLIC POPPY | BIRKO-FLO
GOOD

WOMEN
ICY METALLIC

- Models: Arizona, Gizeh, Mayari.
- Upper Material: Birko-Flor Icy Metallic.
- Footbed: Anatomically shaped suede-covered cork-latex footbed.
- Outsole: EVA.
- Buckle/Closure: Standard Buckle.
- Newness: New seasonal colorway.



00

S 1016237 | 35-43 | 13,0 | 0 JPY
MADRID BIG BUCKLE | GRACEFUL TAPE | BIRKO-FLOP
G00

0

S 1015279 | 35-43 | 13,0
MADRID BIG BUCKLE | GRACEFUL PEARLWARE
G00

WOMEN
GRACEFUL BIG BUCKLE

- Model *Madrid Big Buckle.*
- Upper Material *Birko-Flor Graceful.*
- Footbed *Anatomically shaped suede-covered cork-latex footbed.*
- Outsole *EVA.*
- Buckle/Closure *Big Buckle.*

**WOMEN
GRACEFUL**

BIRKENSTOCK®



17166 | 35-43 | 10,500 JPY
MAYARI | GRACEFUL PEARL WHITE | BIRKO-FLOR
GOOD

1018922 | 35-43 | 10,500 JPY
GIZEH | GRACEFUL LAVENDER BLU
GOOD



1016408 | 35-43 | 10,500 JPY
MAYARI | GRACEFUL TAUPE | BIRKO-FLOR
GOOD



1018912 | 35-43 | 10,500 JPY
MAYARI | GRACEFUL LAVENDER BLUSH | BIRKO-FLOR
GOOD



S 1016169 | 35-43 | 10,500 JPY
BIRSYDNEY | GRACEFUL TAUPE | BIRKO-FLOR
GOOD



S 1016171 | 35-43 | 10,500 JPY
SYDNEY | GRACEFUL PEARL WHITE | BIRKO-FLOR
GOOD



1016144 | 35-43 | 10,500 JPY
GIZEH | GRACEFUL TAUPE | BIRKO-FLOR
GOOD



1943871 | 35-43 | 10,500 JPY
GIZEH | GRACEFUL PEARL WHITE | BIRKO-FLOR
GOOD

**WOMEN
GRACEFUL**

- **Models** Mayari, Sydney, Gizeh, Madrid.
- **Upper Material** Birko-Flor Graceful.
- **Footbed** Anatomically shaped suede-covered cork-latex footbed.
- **Outsole** EVA.
- **Buckle/Closure** Standard buckle.
- **Newness** New seasonal colorways.

FOR INTERNAL USE ONLY

SPRING SUMMER 2021

CLASSIC | INSPIRED



00
S 101940 | 35-43 | 10,500 JPY
GIZEH | PATENT CORAL PEACH | BIRKO-FLO
GOOD

0
S 1019715 | 35-43 | 10,5
YAO BALANCE | PATENT DOVE BL
GOOD



0
S 1019423 | 35-43 | 10,500 JPY
ARIZONA | PATENT DOVE BLUE | BIRKO-FLO
GOOD



0
S 1019386 | 35-43 | 10,500 JPY
GIZEH | PATENT DOVE BLUE | BIRKO-FLO
GOOD



S 1016355 | 35-43 | 10,500 JPY
YAO BALANCE | PATENT BLACK | BIRKO-FLO
GOOD



S 1016353 | 35-43 | 10,500 JPY
YAO BALANCE | PATENT WHITE | BIRKO-FLO
GOOD



0
S 1019716 | 35-43 | 10,500 JPY
ARIZONA | PATENT CORAL PEACH | BIRKO-FLO
GOOD



0
S 1019445 | 35-43 | 8,500 JPY
MADRID | PATENT CORAL PEACH | BIRKO-FLO
GOOD

**WOMEN
PATENT**

- Models: Arizona, Gizeh, Yao Balance, Madrid.
- Upper Material: Birko-Flor Patent.
- Footbed: Anatomically shaped suede-covered cork-latex footbed.
- Outsole: EVA.
- Buckle/Closure: Standard Buckle.
- Newness: New colors.



CLASSIC AUTHENTIC SPRING SUMMER 2021

At BIRKENSTOCK, leather, Birko-Flor, EVA soles, and our anatomically shaped cork/latex footbed are the ingredients for iconic designs.

While this recipe may sound straightforward, the in-house creative team excels at coming up with endless variations. For Spring/Summer 2021, a single phrase sufficed to lend BIRKENSTOCK Classics – many of which have already enjoyed half a century of success.

And the designs produced by this idea are so fresh and full of zest that many fans are destined to become collectors. The BIRKENSTOCK story is one of style, culture and responsibility – concepts that drive the vegan models as well.



00

1018386 | 39-46 | 18,000 JPY
 1018339 | 39-46 | 18,000 JPY
 ARIZONA | NOMAD BLACK | LEATHER
 BETT

0

1019705 | 39-46 | 22,000 JPY
 1019738 | 39-46 | 22,000 JPY
 KYOTO | NOMAD BLACK | LEATHER
 BETT

**MEN
 NOMAD LEATHER**

- **Model** Arizona, Kyoto.
- **Upper Material** Soft full grain leather.
- **Footbed** Suede covered anatomically shaped cork-latex footbed.
- **Outsole** EVA.
- **Buckle/Closure** Standard buckles for Arizona, Hook and loop closure for Kyoto.
- **Usage** Leisure.
- **Newness** New soft Double Face leather.



00

Π1019005 | 39-46 | 18,000 JPY
 S101903 | 39-46 | 18,000 JPY
 ARIZONA SFB | DESERT BUCK WHALE GRAY | NUBUCK BETTER

0

Π1019755 | 39-46 | 22,000 JPY
 S1019757 | 39-46 | 22,000 JPY
 KYOTO SFB | DESERT BUCK ALMOND | NUBUCK BETTER



SOFT FOOTBED

0

Π1019744 | 39-46 | 22,000 JPY
 S1019759 | 39-46 | 22,000 JPY
 KYOTO SFB | DESERT BUCK WHALE GRAY | NUBUCK BETTER



SOFT FOOTBED

0

Π1018938 | 39-46 | 18,000 JPY
 S1019008 | 39-46 | 18,000 JPY
 ARIZONA SFB | DESERT BUCK ALMOND | NUBUCK BETTER



SOFT FOOTBED

0

Π1019007 | 39-46 | 18,000 JPY
 S1018993 | 39-46 | 18,000 JPY
 ARIZONA SFB | DESERT BUCK ROAST | NUBUCK BETTER

**MEN
 DESERT BUCK**

- **Models** Arizona, Kyoto.
- **Upper Material** Soft tumbled nubuck.
- **Footbed** Soft, suede-covered anatomically shaped cork-latex footbed.
- **Outsole** EVA.
- **Buckle/Closure** Arizona – standard buckle, Kyoto – hook and loop.
- **Usage** Leisure.
- **Newness** New Soft Nubuck story exclusive for men.

MEN
DESERT SOIL

BIRKENSTOCK®



SOFT FOOTBED

SOFT FOOTBED

00

Π1019618 | 39-46 | 13,000 JPY
S1019668 | 39-46 | 13,000 JPY
ARIZONA SFB | DESERT SOIL GRAY | BIRKO-FLOR
GOOD

0

Π1019657 | 39-46 | 13,000 JPY
MEDINA SFB | DESERT SOIL CAMO GREEN
GOOD

SOFT FOOTBED



0

Π1018755 | 39-46 | 14,000 JPY
S1018816 | 39-46 | 14,000 JPY
ZÜRICH SFB | DESERT SOIL GRAY | BIRKO-FLARIZONA SFB | DESERT SOIL BLUE | BIRKO-FGOOD
GOOD

SOFT FOOTBED



0

Π1019596 | 39-46 | 13,000 JPY
S1019681 | 39-46 | 13,000 JPY
ARIZONA SFB | DESERT SOIL BLUE | BIRKO-FGOOD
GOOD

SOFT FOOTBED



0

Π1018754 | 39-46 | 13,000 JPY
MEDINA SFB | DESERT SOIL BLUE | BIRKO-FLOR
GOOD

SOFT FOOTBED



0

Π1018719 | 39-46 | 14,000 JPY
S1018827 | 39-46 | 14,000 JPY
ZÜRICH SFB | DESERT SOIL BLUE | BIRKO-FLARIZONA SFB | DESERT SOIL CAMO GREEN | BIRKO-FGOOD
GOOD

SOFT FOOTBED



0

Π1019597 | 39-46 | 13,000 JPY
S1019655 | 39-46 | 13,000 JPY
ARIZONA SFB | DESERT SOIL CAMO GREEN | BIRKO-FLARIZONA SFB | DESERT SOIL CAMO GREEN | BIRKO-FGOOD
GOOD

SOFT FOOTBED



0

Π1018780 | 39-46 | 14,000 JPY
S1018814 | 39-46 | 14,000 JPY
MILANO SFB | DESERT SOIL CAMO GREEN | BIRKO-FLOR
GOOD

MEN
DESERT SOIL

- **Models** Arizona, Medina, Milano, Zürich.
- **Upper Material** Birko-Flor.
- **Footbed** Soft, suede-covered anatomically shaped cork latex footbed.
- **Outsole** EVA outsole in soft tonal & contrast colors.
- **Buckle/Closure** Matte Fabric Feel buckle.
- **Usage** Leisure.
- **Newness** New seasonal colors.

SPRING SUMMER 2021

CLASSIC | AUTHENTIC



0

0
 101973 39-46 18,000 JPY
 S 101977 39-46 18,000 JPY
 KYO | GRAY TAUPE/CAMO ALMOND | SUEDE
 BETT

0

0
 101973 39-46 18,000 JPY
 S 101976 39-46 18,000 JPY
 KYO | MIDNIGHT/CAMO GREEN | SUEDE
 BETT

**MEN
 DESERT SUEDE**

- **Model** Kyoto.
- **Upper Material** Suede upper with Birko-Flor strap.
- **Footbed** Suede-covered anatomically shaped cork-latex footbed.
- **Outsole** EVA.
- **Buckle/Closure** Hook & loop closure.
- **Usage** Leisure.
- **Newness** New material mix, offered exclusively for men, on the focus model Kyoto.

BIRKENSTOCK®



00

00
r 1018626 | 39-46 | 16,0 | 10 JPY
s 101872 | 39-46 | 16,0 | 10 JPY
**ARIZONA | VINTAGE WOOD ROAST | LEXTRA
BETT**

0

0
r 101869 | 39-46 | 17,0
s 1018685 | 39-46 | 17,0
**MILANO | VINTAGE WOOD RC
BETT**

SPRING SUMMER 2021

MEN VINTAGE WOOD

- **Model** Arizona, Milano.
- **Upper Material** Softly oiled leather upper with vintage-like pull-up effect.
- **Footbed** suede-covered anatomically shaped cork-latex footbed.
- **Outsole** EVA.
- **Buckle/Closure** Standard Buckles.
- **Usage** Leisure.
- **Newness** New vintage-looking leather story for men.

CLASSIC | AUTHENTIC



VEGAN

VEGAN

VEGAN

1018673 | 39-46 | 10,500 JPY
 S 1018723 | 39-46 | 10,500 JPY
 ARIZONA | SADDLE MATT GINGER BROWN VEG | BIRKO-FLO
 BIRKO-
 GOOD

1015536 | 39-46 | 10,500 JPY
 MEDINA | SADDLE MATT BROWN VEG | BIRKO-FLO
 GOOD

1015528 | 39-46 | 10,500 JPY
 S 1015527 | 39-46 | 10,500 JPY
 ARIZONA | SADDLE MATT NAVY VEG | BIRKO-FLO
 GOOD

VEGAN

VEGAN



1015526 | 39-46 | 10,500 JPY
 S 1015527 | 39-46 | 10,500 JPY
 ARIZONA | SADDLE MATT BROWN VEG | BIRKO-GOOD
 GOOD

1015534 | 39-46 | 10,500 JPY
 MEDINA | SADDLE MATT BROWN VEG | BIRKO-FLO
 GOOD

MEN SADDLE MATT

- **Models** Arizona, Medina.
- **Upper Material** Birko-Flor with a finish reminiscent of a saddle leather – matte and slightly rugged.
- **Footbed** Microfiber-covered, anatomically shaped cork-latex footbed.
- **Outsole** EVA.
- **Buckle/Closures** Standard Buckles.
- **Usage** Leisure.
- **Newness** New Ginger Brown seasonal colorway.
- **Additional Features** Upper, insole and outsole are 100% vegan.



CORE ESSENTI

CORE ESSENTI

SOFT FOOTBED

171321 | 35-43 | 15,0 | 10 JPY
MAYARI | HABANA | OILED LEATHER
BETT

55281 | 35-46 | 16,0
55283 | 35-46 | 16,0
ARIZONA | TABACCO BROWN | OILED LEATHER
BETT

**UNISEX
OILED LEATHER**

- **Models** Arizona, Arizona SFB, Boston, Gizeh, Mayari, Milano, Lugano, Taormina.
- **Upper material** Oiled leather
- **Footbed** Anatomically shaped cork latex footbed with suede lining.
- **Outsole** EVA.
- **Buckle/Closure** Standard buckle.
- **Newness** New seasonal colors and Taormina model.

UNISEX
OILED LEATHER

BIRKENSTOCK®



CORE ESSENTI

Π552111 | 35-46 | 15,000 JPY
S 552113 | 35-46 | 15,000 JPY
ARIZONA | BLACK | OILED LEATHER
BETTER



CORE ESSENTI
SOFT FOOTBED

Π752481 | 35-46 | 16,000 JPY
S 752483 | 35-46 | 16,000 JPY
ARIZONA SFB | BLACK | OILED LEATHER
BETTER



CORE ESSENTI

Π52531 | 35-46 | 15,000 JPY
S 52533 | 35-46 | 15,000 JPY
ARIZONA | HABANA | OILED LEATHER
BETTER



CORE ESSENTI
SOFT FOOTBED

Π452761 | 35-46 | 16,000 JPY
S 452763 | 35-46 | 16,000 JPY
ARIZONA SFB | HABANA | OILED LEATHER
BETTER



CORE ESSENTI

Π352201 | 35-46 | 15,000 JPY
S 352203 | 35-46 | 15,000 JPY
ARIZONA | TABACCO BROWN | OILED LEATHER
BETTER



CORE ESSENTI

Π59461 | 35-46 | 18,000 JPY
S 59463 | 35-46 | 18,000 JPY
BOSTON | BLACK | OILED LEATHER
BETTER



CORE ESSENTI

Π860131 | 35-46 | 18,000 JPY
S 860133 | 35-46 | 18,000 JPY
BOSTON | HABANA | OILED LEATHER
BETTER



CORE ESSENTI

Π960811 | 35-46 | 18,000 JPY
S 960813 | 35-46 | 18,000 JPY
BOSTON | TABACCO BROWN | OILED LEATHER
BETTER



CORE ESSENTI

Π743831 | 35-46 | 15,000 JPY
GIZEH | HABANA | OILED LEATHER
BETTER



CORE ESSENTI

Π943811 | 35-46 | 15,000 JPY
GIZEH | TABACCO BROWN | OILED LEATHER
BETTER



CORE ESSENTI

Π171481 | 35-43 | 15,000 JPY
MAYARI | BLACK | OILED LEATHER
BETTER



CORE ESSENTI

Π1011433 | 35-43 | 15,000 JPY
MAYARI | TABACCO BROWN | OILED LEATHER
BETTER



CORE ESSENTI

Π34871 | 35-46 | 16,000 JPY
S 34873 | 35-46 | 16,000 JPY
MILANO | HABANA | OILED LEATHER
BETTER



CORE ESSENTI

Π1017465 | 35-46 | 16,000 JPY
S 1017466 | 35-46 | 16,000 JPY
LUGANO | CAMBERRA BLACK | NUBUCK
BETTER



SOFT FOOTBED

0
Π1019313 | 35-46 | 16,000 JPY
S 1019377 | 35-46 | 16,000 JPY
ARIZONA SFB | FADED KHAKI | OILED LEATHER
BETTER

FOR INTERNAL USE ONLY

SPRING SUMMER 2021

CLASSIC | AUTHENTIC

**UNISEX
OILED LEATHER**

BIRKENSTOCK®



0
 Π1019327 | 35-46 | 15,000 JPY
 GIZEH | FADED KHAKI | OILED LEATHER
 BETTER



0
 Π1019024 | 35-46 | 16,000 JPY
 S 1019113 | 35-46 | 16,000 JPY
 LUGANO | FADED KHAKI | NUBUCK
 BETTER



Π1013643 | 35-46 | 16,000 JPY
 S 1013644 | 35-46 | 16,000 JPY
 ARIZONA SFB | BLUE | OILED LEATHER
 BETTER



0
 Π1019658 | 35-43 | 15,000 JPY
 MAYARI | BLUE | OILED LEATHER
 BETTER



0
 Π1019326 | 35-46 | 16,000 JPY
 S 1019365 | 35-46 | 16,000 JPY
 ARIZONA SFB | OCHRE | OILED LEATHER
 BETTER



0-
 Π1019432 | 35-43 | 16,000 JPY
 TAORMINA | OCHRE | NUBUCK
 BETTER



0-
 Π1019470 | 35-43 | 16,000 JPY
 TAORMINA | LAVENDER BLUSH | NUBUCK
 BETTER

**UNISEX
SMOOTH LEATHER**



0

1019019 | 35-46 | 13,000 JPY
1019075 | 35-46 | 13,000 JPY
 ARIZONA | GINGER BROWN | LEATHER
 BETTER

3410 | 35-46 | 14,000 JPY
34103 | 35-46 | 14,000 JPY
 MILANO | DARK BROWN | LEATHER
 BETTER



51191 | 35-46 | 13,000 JPY
S 51193 | 35-46 | 13,000 JPY
 ARIZONA | BLACK | LEATHER
 BETTER



51101 | 35-46 | 13,000 JPY
S 51103 | 35-46 | 13,000 JPY
 ARIZONA | DARK BROWN | LEATHER
 BETTER



51151 | 35-46 | 13,000 JPY
S 51153 | 35-46 | 13,000 JPY
 ARIZONA | BLUE | LEATHER
 BETTER



51131 | 35-46 | 13,000 JPY
S 51133 | 35-46 | 13,000 JPY
 ARIZONA | WHITE | LEATHER
 BETTER



0
1019066 | 35-46 | 14,000 JPY
S 1019123 | 35-46 | 14,000 JPY
 MILANO | GINGER BROWN | LEATHER
 BETTER



34191 | 35-46 | 14,000 JPY
S 34193 | 35-46 | 14,000 JPY
 MILANO | BLACK | LEATHER
 BETTER



60191 | 35-46 | 16,000 JPY
S 60193 | 35-46 | 16,000 JPY
 BOSTON | BLACK | LEATHER
 BETTER



60101 | 35-46 | 16,000 JPY
S 60103 | 35-46 | 16,000 JPY
 BOSTON | DARK BROWN | LEATHER
 BETTER



60151 | 35-46 | 16,000 JPY
S 60153 | 35-46 | 16,000 JPY
 BOSTON | BLUE | LEATHER
 BETTER

**UNISEX
SMOOTH LEATHER**

- **Models** Arizona, Boston, Milano.
- **Upper material** Smooth leather.
- **Footbed** Anatomically shaped cork-latex footbed with suede lining.
- **Outsole** EVA.
- **Buckle/Closure** Standard buckle.
- **Newness** New Ginger Brown colorway.

FOR INTERNAL USE ONLY



CORE ESSENTI

71791 | 35-46 | 9,5
MAYARI | BLACK | BIRKO-FLOR



CORE ESSENTI

5175 | 35-46 | 9,5
5175 | 35-46 | 9,5
ARIZONA | BLUE | BIRKO-FLOR



CORE ESSENTI

34701 | 35-46 | 10,500 JPY
34703 | 35-46 | 10,500 JPY
MILANO | DARK BROWN | BIRKO-FLOR
GOOD



CORE ESSENTI

34731 | 35-46 | 10,500 JPY
34733 | 35-46 | 10,500 JPY
MILANO | WHITE | BIRKO-FLOR
GOOD



44791 | 35-46 | 9,500 JPY
RAMSES | BLACK | BIRKO-FLOR
GOOD



1016687 | 35-43 | 9,500 JPY
YAO BALANCE | BLACK | BIRKO-FLOR
GOOD



44701 | 35-46 | 9,500 JPY
RAMSES | DARK BROWN | BIRKO-FLOR
GOOD



1016761 | 35-43 | 9,500 JPY
YAO BALANCE | WHITE | BIRKO-FLOR
GOOD



SOFT FOOTBED

1019067 | 35-46 | 10,500 JPY
1019119 | 35-46 | 10,500 JPY
ARIZONA SFB | GINGER BROWN | BIRKO-FLOR
GOOD



1019053 | 35-43 | 9,500 JPY
MAYARI | GINGER BROWN | BIRKO-FLOR
GOOD



1019447 | 35-43 | 9,500 JPY
YAO BALANCE | GINGER BROWN | BIRKO-FLOR
GOOD

UNISEX
BIRKO-FLOR

- Models: Arizona, Arizona SFB, Gizeh, Mayari, Milano, Yao Balance, Madrid, Ramses.
- Upper material: Birko-Flor.
- Footbed: Anatomically shaped cork-latex footbed with suede lining.
- Outsole: EVA.
- Buckle/Closure: Standard buckle.
- Newness: New seasonal Ginger Brown color.



1019713 | 35-46 | 7,500 JPY
MADRID | GINGER BROWN | BIRKO-FLOR
GOOD

UNISEX
BIRKO-FLOR

BIRKENSTOCK®



CORE ESSENTI

S 40793 | 35-46 | 7,500 JPY
MADRID | BLACK | BIRKO-FLOR
GOOD



CORE ESSENTI

S 40393 | 35-46 | 7,500 JPY
MADRID | DARK BROWN | BIRKO-FLOR
GOOD



CORE ESSENTI

S 40733 | 35-46 | 7,500 JPY
MADRID | WHITE | BIRKO-FLOR
GOOD



CORE ESSENTI

Π 71051 | 35-46 | 9,500 JPY
MAYARI | WHITE | BIRKO-FLOR
GOOD



CORE ESSENTI

Π 43691 | 35-46 | 9,500 JPY
GIZEH | BLACK | BIRKO-FLOR
GOOD



CORE ESSENTI

Π 143621 | 35-46 | 9,500 JPY
GIZEH | BLUE | BIRKO-FLOR
GOOD



CORE ESSENTI

Π 43731 | 35-46 | 9,500 JPY
GIZEH | WHITE | BIRKO-FLOR
GOOD



CORE ESSENTI

Π 51791 | 35-46 | 9,500 JPY
S 51793 | 35-46 | 9,500 JPY
ARIZONA | BLACK | BIRKO-FLOR
GOOD



CORE ESSENTI
SOFT FOOTBED

Π 551251 | 35-46 | 10,500 JPY
S 551253 | 35-46 | 10,500 JPY
ARIZONA SFB | BLACK | BIRKO-FLOR
GOOD



CORE ESSENTI

Π 51701 | 35-46 | 9,500 JPY
S 51703 | 35-46 | 9,500 JPY
ARIZONA | DARK BROWN | BIRKO-FLOR
GOOD



CORE ESSENTI

Π 51731 | 35-46 | 9,500 JPY
S 51733 | 35-46 | 9,500 JPY
ARIZONA | WHITE | BIRKO-FLOR
GOOD



CORE ESSENTI
SOFT FOOTBED

Π 51061 | 35-46 | 10,500 JPY
S 51063 | 35-46 | 10,500 JPY
ARIZONA SFB | BLUE | BIRKO-FLOR
GOOD



CORE ESSENTI
SOFT FOOTBED

S 53013 | 35-43 | 10,500 JPY
FLORIDA SFB | BLACK | BIRKO-FLOR
GOOD



CORE ESSENTI
SOFT FOOTBED

S 554713 | 35-43 | 10,500 JPY
FLORIDA SFB | BLUE | BIRKO-FLOR
GOOD



CORE ESSENTI

Π 34791 | 35-46 | 10,500 JPY
S 34793 | 35-46 | 10,500 JPY
MILANO | BLACK | BIRKO-FLOR
GOOD

FOR INTERNAL USE ONLY

SOFT FOOTBED

CORE ESSENTIAL
SOFT FOOTBED



1009530 | 35-46 | 15,00 JPY
 1009531 | 35-46 | 15,00 JPY
 ZÜRICH SFB | MOCCA | SUEDE LEATHER
 BETT

95131 | 35-46 | 14,0
 95131 | 35-46 | 14,0
 ARIZONA SFB | MOCCA | SU
 BETT

SPRING SUMMER 2021

**UNISEX
SUEDE**

- **Models** Arizona, Boston, Zürich.
- **Upper material** Suede.
- **Footbed** Anatomically shaped cork-latex soft footbed with suede lining.
- **Outsole** EVA.
- **Buckle/Closures** Standard and Fabric Feel buckles.
- **Newness** New seasonal colors Faded Khaki and Latte Cream, also new Fabric Feel matte buckles on new seasonal styles.

CLASSIC | AUTHENTIC

UNISEX
SUEDE

BIRKENSTOCK®



SOFT FOOTBED

Π1009534 | 35-46 | 15,000 JPY
S 1009535 | 35-46 | 15,000 JPY
ZÜRICH SFB | MINK | SUEDE LEATHER
BETTER



SOFT FOOTBED

Π1009532 | 35-46 | 15,000 JPY
S 1009533 | 35-46 | 15,000 JPY
ZÜRICH SFB | TAUPE | SUEDE LEATHER
BETTER



SOFT FOOTBED

Π1009526 | 35-46 | 14,000 JPY
S 1009527 | 35-46 | 14,000 JPY
ARIZONA SFB | MINK | SUEDE LEATHER
BETTER



CORE ESSENTI
SOFT FOOTBED

Π951301 | 35-46 | 14,000 JPY
S 951303 | 35-46 | 14,000 JPY
ARIZONA SFB | TAUPE | SUEDE LEATHER
BETTER



CORE ESSENTI
SOFT FOOTBED

Π660461 | 35-46 | 17,000 JPY
S 660463 | 35-46 | 17,000 JPY
BOSTON SFB | MOCCA | SUEDE LEATHER
BETTER



CORE ESSENTI
SOFT FOOTBED

Π1009542 | 35-46 | 17,000 JPY
S 1009543 | 35-46 | 17,000 JPY
BOSTON SFB | MINK | SUEDE LEATHER
BETTER



CORE ESSENTI
SOFT FOOTBED

Π560771 | 35-46 | 17,000 JPY
S 560773 | 35-46 | 17,000 JPY
BOSTON SFB | TAUPE | SUEDE LEATHER
BETTER



SOFT FOOTBED

0
Π1019054 | 35-46 | 17,000 JPY
S 1019108 | 35-46 | 17,000 JPY
BOSTON SFB | FADED KHAKI | SUEDE LEATHER
BETTER



SOFT FOOTBED

0
Π1019045 | 35-46 | 14,000 JPY
S 1019088 | 35-46 | 14,000 JPY
ARIZONA SFB | FADED KHAKI | SUEDE LEATHER
BETTER



SOFT FOOTBED

0
Π1019104 | 35-46 | 17,000 JPY
S 1019068 | 35-46 | 17,000 JPY
BOSTON SFB | LATTE CREAM | SUEDE LEATHER
BETTER



SOFT FOOTBED

0
Π1019071 | 35-46 | 14,000 JPY
S 1019087 | 35-46 | 14,000 JPY
ARIZONA SFB | LATTE CREAM | SUEDE LEATHER
BETTER



SOFT FOOTBED

0
Π1019197 | 35-46 | 15,000 JPY
S 1019299 | 35-46 | 15,000 JPY
ZÜRICH SFB | FADED KHAKI | SUEDE LEATHER
BETTER

SPRING SUMMER 2021

CLASSIC | AUTHENTIC



**UNISEX
BIRKIBUC**

- **Models** Arizona, Milano, Gizeh, Mayari, Ramses, Yao Balance, Florida Fresh.
- **Upper Material** Birkibuc.
- **Footbed** Anatomically shaped cork latex footbed with suede lining.
- **Outsole** EVA.
- **Buckle/Closure** Standard buckle.

**UNISEX
BIRKIBUC**

BIRKENSTOCK®

CORE ESSENTI



S 40093 | 35-46 | 8,500 JPY
MADRID | MOCCA | BIRKIBUC
GOOD

CORE ESSENTI



Π71061 | 35-46 | 10,500 JPY
MAYARI | MOCCA | BIRKIBUC
GOOD

CORE ESSENTI



Π71071 | 35-43 | 10,500 JPY
MAYARI | STONE | BIRKIBUC
GOOD

CORE ESSENTI



Π43751 | 35-46 | 10,500 JPY
GIZEH | MOCCA | BIRKIBUC
GOOD

CORE ESSENTI



Π43391 | 35-46 | 10,500 JPY
GIZEH | STONE | BIRKIBUC
GOOD

CORE ESSENTI



Π151181 | 35-46 | 10,500 JPY
S 151183 | 35-46 | 10,500 JPY
ARIZONA | MOCCA | BIRKIBUC
GOOD

CORE ESSENTI



Π151211 | 35-46 | 10,500 JPY
S 151213 | 35-46 | 10,500 JPY
ARIZONA | STONE | BIRKIBUC
GOOD

CORE ESSENTI



Π634501 | 35-46 | 12,000 JPY
S 634503 | 35-46 | 12,000 JPY
MILANO | MOCCA | BIRKIBUC
GOOD



S 1016329 | 35-43 | 10,500 JPY
YAO BALANCE | MOCCA | BIRKIBUC
GOOD



S 1016351 | 35-43 | 10,500 JPY
YAO BALANCE | STONE | BIRKIBUC
GOOD

SPRING SUMMER 2021

CLASSIC | AUTHENTIC



R 1015080 | 39-46 | 9,5
 S 1014934 | 35-43 | 9,5
 ZERMATT STANDARD | LIGHT GR
 G00

UNISE
COZY HOME

R 1014938 | 39-46 | 9,5
 S 1014932 | 35-43 | 9,5
 ZERMATT STANDARD | ANTHRAC
 G00

- Model **Zermatt**
- Upper Material **Wool felt upper.**
- Footbed **Replaceable, standard, anatomically shaped cork-latex footbed**
- Outsole **Latex dipped outsole**
- Buckle/Closure **2**
- Usage **Leisure**
- Newness **New Soft Pink colorway**

SPRING SUMMER 21

CLASSIC | AUTHENTIC



R 16058 | 35-46 | 12,00
 S 16058 | 35-46 | 12,00
 BOSTON | CACAO | WOOL
 G00

R 16037 | 35-46 | 12,00
 S 16037 | 35-46 | 12,00
 BOSTON | ANTHRAC
 G00

UNISE
WOOLY HOME

- Model **Boston.**
- Upper Material **Wool.**
- Footbed **Anatomically shaped cork latex footbed with suede lining.**
- Outsole **EVA.**
- Buckle/Closure **Standard Buckle.**



CLASSIC INSPIRED SPRING SUMMER 2021

One of the key segments for the in-house creative team is the open-ended realm of inspiration. Classic models may always form the foundation, but in BIRKENSTOCK's own atelier, they serve as jumping-off points for prototypes featuring fresh designs and styles.

It's also about winning over new target groups with the storied brand's youthful drive. Manifestations of themes like a soft nubuck leather or a metallic suede slot seamlessly into the BIRKENSTOCK Collection. And pairing these modern moods with classic made-in-Germany quality makes for footwear that is truly unique.



■■■■■■■■■■ 000 JPY
■■■■■■■■■■ 000 JPY
■■■■■■■■■■ 0TH LEATHER
■■■■■■■■■■ ST

■■■■■■■■■■ | 35-46 | 2000 JPY
■■■■■■■■■■ 000 JPY
■■■■■■■■■■ 0TH LEATHER
■■■■■■■■■■ ST

SPRING SUMMER 2021

**UNISEX
EXQUISITE**

- ■■■■■■: Arizona, Boston
- ■■■■■■: leather upper, full exquisite Piumato-leather covered cork-latex footbed, standard EVA outsole

CLASSIC | INSPIRED



★ MARKET HIGHLIGHT
SOFT FOOTBED

★ MARKET HIGHLIGHT
SOFT FOOTBED

0

1019205 | 35-46 | 20,000 JPY
1019292 | 35-46 | 20,000 JPY
KYOTO SFB | TAUPE | SUEDE LEATHER /
BETTER

0

1019260 | 35-46 | 20,000 JPY
1019291 | 35-46 | 20,000 JPY
KYOTO SFB | MIDNIGHT | SUEDE LEATHER /
BETTER



SOFT FOOTBED
★ MARKET HIGHLIGHT

0

1019722 | 35-46 | 20,000 JPY
KYOTO SFB | SOFT PINK | SUEDE LEATHER /
BETTER



SOFT FOOTBED
★ MARKET HIGHLIGHT

0

1019711 | 35-46 | 20,000 JPY
1019720 | 35-46 | 20,000 JPY
KYOTO SFB | OCHRE | SUEDE LEATHER /
BETTER

UNISEX SUEDE EXQUISITE

- **Model** Kyoto.
- **Upper Material** Suede & nubuck.
- **Footbed** Soft, suede-covered, anatomically shaped cork-latex footbed.
- **Outsole** EVA.
- **Buckle/Closure** Buckle & loop.
- **Usage** Leisure.
- **Newness** Soft Footbed on Kyoto model and new seasonal colors: Soft Pink, Ochre.



0
 1019206 | 35-46 | 20,000 JPY
 1019290 | 35-46 | 20,000 JPY
 ARIZONA | MONO CROC BLACK | HEX | LEATHER
 BETT

00
 1019228 | 35-46 | 20,000 JPY
 1019187 | 35-46 | 20,000 JPY
 ARIZONA | MONO CROC WHITE | HEX | LEATHER
 BETT

0
 101994 | 35-46 | 21,000 JPY
 101993 | 35-46 | 21,000 JPY
 ARIZONA SPLIT | MONO CROC BLACK/WHITE | HEX | LEATHER
 BETT

UNISEX MONO CROC

- **Models** Arizona HEX, Arizona Split.
- **Upper Material** Croc embossed leather upper.
- **Footbed** Microfiber-covered, anatomically shaped cork-latex footbed.
- **Outsole** EVA.
- **Buckle/Closure** Standard Buckle.
- **Usage** Leisure.
- **Newness** New croc embossed leather combined with tonal buckles and footbeds.



00

M 1019098 | 35-46 | 12,000 JPY
 S 101906 | 35-46 | 12,000 JPY
 ARIZONA | TRIPLES BLACK | LEATHER
 GOOD

0

M 1019703 | 35-46 | 13,000 JPY
 S 1019711 | 35-46 | 13,000 JPY
 ARIZONA SPLIT | BLACK/WHITE
 GOOD



0

M 1019061 | 35-46 | 12,000 JPY
 S 1019046 | 35-46 | 12,000 JPY
 ARIZONA | TRIPLES WHITE | LEATHER
 GOOD

UNISEX BF TRIPLES

- **Models** Arizona, Arizona Split.
- **Upper Material** Birko-Flor.
- **Footbed** Microfiber-covered, anatomically shaped cork-latex footbed.
- **Outsole** EVA.
- **Buckle/Closure** Standard Buckle.
- **Usage** Leisure.
- **Newness** Seasonal black/white Footbeds & buckles on iconic Birko-Flor Arizonas; new Arizona Split model.

**UNISEX
PATENT**

BIRKENSTOCK®

**CORE
ESSENTI**

**CORE
ESSENTI**



**1005299 | 35-43 | 10,
GIZE | WHITE | BIRKO-FLO
GOOD**

**71091 | 35-43 | 10,5
MAYARI | BLACK | BIRKO-
GOOD**

**CORE
ESSENTI**

**CORE
ESSENTI**

**CORE
ESSENTI**



**S 40303 | 35-43 | 8,500 JPY
MADRID | BLACK | BIRKO-FLO
GOOD**

**S 1005310 | 35-43 | 8,500 JPY
MADRID | WHITE | BIRKO-FLO
GOOD**

**1005280 | 35-43 | 10,500 JPY
MAYARI | WHITE | BIRKO-FLO
GOOD**

**CORE
ESSENTI**

**CORE
ESSENTI**

**CORE
ESSENTI**



**143661 | 35-43 | 10,500 JPY
GIZEH | BLACK | BIRKO-FLO
GOOD**

**1005291 | 35-46 | 10,500 JPY
S 1005292 | 35-46 | 10,500 JPY
ARIZONA | BLACK | BIRKO-FLO
GOOD**

**1005293 | 35-46 | 10,500 JPY
S 1005294 | 35-46 | 10,500 JPY
ARIZONA | WHITE | BIRKO-FLO
GOOD**

**UNISEX
PATENT**

- Models: Arizona, Gizeh, Mayari, Madrid.
- Upper Material: Birko-Flor Patent.
- Footbed: Anatomically shaped suede-covered cork-latex footbed.
- Outsole: EVA.
- Buckle/Closure: Standard Buckle.

SPRING SUMMER 2021

CLASSIC | INSPIRED



CORE ESSENTIAL
SOFT FOOTBED

CORE ESSENTIAL
SOFT FOOTBED

1005048 | 35-43 | 15,
GIZEH SFB | METALLIC COPPER | LEATHER
BETTER

952093 | 35-43 | 15,
ARIZONA | METALLIC COPPER
BETTER



CORE ESSENTIAL
SOFT FOOTBED

1003674 | 35-43 | 15,000 JPY
GIZEH SFB | METALLIC SILVER | LEATHER
BETTER



CORE ESSENTIAL
SOFT FOOTBED

S1005961 | 35-43 | 15,000 JPY
ARIZONA SFB | METALLIC SILVER | LEATHER
BETTER

**WOMEN
METALLICS**

- **Models** Arizona, Gizeh
- **Upper Material** Metallic leather.
- **Footbed** Anatomically shaped suede-covered cork-latex footbed.
- **Outsole** EVA.
- **Buckles/Closures** Standard buckle.



CLASSIC NEXT GEN **SPRING SUMMER 2021**

At BIRKENSTOCK, leather, Birko-Flor, EVA soles, and our anatomically shaped cork/latex footbed are the ingredients for iconic designs.

While this recipe may sound straightforward, the in-house creative team excels at coming up with endless variations. For Spring/Summer 2021, a single phrase sufficed to lend BIRKENSTOCK Classics – many of which have already enjoyed half a century of success.

And the designs produced by this idea are so fresh and full of zest that many fans are destined to become collectors. The BIRKENSTOCK story is one of style, culture and responsibility – concepts that drive the vegan models as well.



0

01018461 | 35-46 | 14,000 JPY
S1018713 | 35-46 | 14,000 JPY
TEMA | WHITE | MICROFIBRE
BETTER
SEASON2

0

01019685 | 35-46 | 14,000 JPY
S1019696 | 35-46 | 14,000 JPY
TEMA | ULTRA BLUE | MICROFIBRE
BETTER
SEASON2

UNISEX SPORT TECH

- Model: TEMA.
- Upper Material: Microfiber and PU upper.
- Footbed: Microfiber-covered, anatomically shaped cork-latex footbed.
- Outsole: EVA.
- Buckle/Closure: Buck and loop.
- Newness: New seasonal colors Ultra Blue, White and Poppy.



0

01018542 | 35-46 | 14,000 JPY
S1018697 | 35-46 | 14,000 JPY
TEMA | POPPY | MICROFIBRE
BETTER
SEASON2

0

01013682 | 35-46 | 14,000 JPY
S1013683 | 35-46 | 14,000 JPY
TEMA | BLACK | MICROFIBRE
BETTER
SEASON2

SPRING SUMMER 21



0

01019229 | 35-46 | 12,000 JPY
S1019254 | 35-46 | 12,000 JPY
ARIZONA | POPPY | BIRKO-FLOR
GOO

0

01019232 | 35-46 | 12,000 JPY
S1019301 | 35-46 | 12,000 JPY
ARIZONA | ULTRA BLUE | BIRKO-FLOR
GOO

UNISEX

ARIZONA

- Model: Arizona.
- Upper Material: Birko-Flor.
- Footbed: Microfiber-covered, anatomically shaped cork-latex footbed.
- Outsole: EVA.

- Buckle/Closure: Standard Buckle.
- Usage: Leisure.
- Newness: New sportswear inspired colorways, contrast color footbeds.

CLASSIC | NEXT GEN



O

1019321 | 35-46 | 12,000 JPY
S 1019334 | 35-46 | 12,000 JPY
ARIZONA | MONSTERA WHITE/BOLD
GOOD

O

1019731 | 35-46 | 13,000 JPY
S 1019774 | 35-46 | 13,000 JPY
ARIZONA S | WHITE/BOLD JADE
GOOD



1019204 | 35-46 | 12,000 JPY
S 1019293 | 35-46 | 12,000 JPY
ARIZONA | MONSTERA WHITE/LIME SOUR
GOOD



1019750 | 35-46 | 13,000 JPY
S 1019754 | 35-46 | 13,000 JPY
BIARIZONA SPLIT | WHITE/LIME SOUR
GOOD

**UNISEX
TREND PRINTS & COLORS**

- **Models** Arizona, Arizona Split.
- **Upper Material** Birko-flor upper.
- **Footbed** Microfiber-covered, anatomically shaped cork latex footbed.
- **Outsole** EVA.
- **Buckle/Closure** Standard Buckle.
- **Usage** Leisure.
- **Newness** New model Arizona Split, also new monstera (tropical flower) inspired print.



CLASSIC ACTIVE
SPRING SUMMER 2021

**UNISEX
ARTIC OLD**

BIRKENSTOCK®



0
1018461 | 39-46 | 20,000 JPY
ARIZONA CT M'S | FADED KHAKI | OILED LEATHER
BETTER

0
1018426 | 39-46 | 21,000 JPY
MILANO CT | BLACK | OILED LEATHER
BETTER



0
1018461 | 39-46 | 20,000 JPY
ARIZONA CT M'S | BLACK | OILED LEATHER
BETTER



0
1018427 | 39-46 | 21,000 JPY
MILANO CT | FADED KHAKI | OILED LEATHER
BETTER

**UNISEX
ARTIC OLD**

- **Models** Arizona, Milano, Sierra.
- **Upper Material** Oiled Leather.
- **Footbed** suede-covered anatomically shaped cork-latex footbed.
- **Outsole** 2 component PU outsole.
- **Buckle/Closure** Classic Buckle.
- **Usage** True Outdoor activities requiring great traction, footroll.
- **Newness** New color – Black, Faded Khaki.



101840 | 39-46 | 16,000 JPY

ARIZONA CT M'S | DESERT SOIL FRENCH ROAST | BIRKO-FLO
BETTER

1013753 | 39-46 | 16,000 JPY

ARIZONA CT M'S | DESERT SOIL BLA



1013753 | 39-46 | 18,000 JPY

MILANO CT | DESERT SOIL BLACK | BIRKO-FLMILANO CT | FRENCH ROAST | BIRKO-FLO
BETTER



U

1018403 | 39-46 | 18,000 JPY

MILANO CT | FRENCH ROAST | BIRKO-FLO
BETTER

**MEN
DESERT SOIL**

- **Model** Arizona, Milano.
- **Upper Material** Birko-Flor Desert Soil.
- **Footbed** suede-covered anatomically shaped cork-latex footbed.
- **Outsole** 2 component PU outsole.
- **Buckle/Closure** Classic Buckle.
- **Usage** True Outdoor activities requiring great traction, footroll.
- **Newness** New Color – French Roast.



S 101910 | 35-43 | 16,000 JPY
**SIERRA CT | BLACK | BIRKIBUC
 BETT**

0
 S 101839 | 35-43 | 18,000 JPY
**SONORA CT | BLACK
 BETT**



0
 S 101962 | 35-43 | 18,000 JPY
**SONORA CT | STONE | BIRKIBUC
 BETT**

**WOMEN
 BIRKIBUC**

- **Model** Sierra, Sonora.
- **Upper Material** Birko-Flor Nubuck.
- **Footbed** Suede-covered anatomically shaped cork-latex footbed.
- **Outsole** 2 component PU outsole.
- **Buckle/Closure** Classic Buckle.
- **Usage** True Outdoor activities requiring great traction, footroll.

**WOMEN & MEN
ADVENTURE CROSSCOUNTRY**

BIRKENSTOCK®



0
S1019204 | 39-46 | 20,000 JPY
ATACAMA CC | FUTURA SAPPHIRE | BIRKO-FLOR
BETTER

0
S1019027 | 35-43 | 21,000 JPY
KALAHARI CC | FUTURA KHAKI
BETTER



S1013755 | 39-46 | 20,000 JPY
ATACAMA CC | FUTURA BLACK | BIRKO-FLOR
BETTER



S1013758 | 39-46 | 21,000 JPY
TATACOA CC | FUTURA BLACK | BIRKO-FLOR
BETTER



00
S1019178 | 39-46 | 21,000 JPY
TATACOA CC | FUTURA SAPPHIRE | BIRKO-FLOR
BETTER



S1013770 | 35-43 | 20,000 JPY
SAHARA CC | FUTURA BLACK | BIRKO-FLOR
BETTER



00
S1019145 | 35-43 | 20,000 JPY
SAHARA CC | FUTURA KHAKI | BIRKO-FLOR
BETTER



S1013773 | 35-43 | 21,000 JPY
KALAHARI CC | FUTURA BLACK | BIRKO-FLOR
BETTER

**WOMEN & MEN
ADVENTURE CROSSCOUNTRY**

- **Models** Sahara, Kalahari, Atacama und Tatacoa.
- **Material** Washable Birko-Flor Futura upper.
- **Footbed** Microfiber-covered cork-latex footbed.
- **Outsole** EU/TPU.
- **Functionality** Good and firm grip, non-slip properties, great flexibility, PU/TPU outsole protects the cork latex footbed and ensures its longevity.
- **Newness** New seasonal Sapphire and Khaki colorways.

FOR INTERNAL USE ONLY

SPRING SUMMER 2021

CLASSIC | AUTHENTIC



00

101905 | 41-46 | 5,0 | 10 JPY
101914 | 36-41 | 5,0 | 10 JPY
ARIZONA EVA | NAVY | EVA
VAL

101539 | 35-46 | 4,5
BARBADOS EVA | BLACK
VAL

SPRING SUMMER 2021

CLASSIC | AUTHENTIC

**UNISEX
BASICS**

- **Models** Arizona, Gizeh, Madrid, Honolulu, Barbados.
- **Upper Material** EVA.
- **Footbed** EVA.
- **Outsole** EVA.
- **Buckle/Closure** Classic Buckle.
- **Usage** Sea, pool & spa.
- **Newness** Tonal buckles on all Navy and Khaki Styles.
- **Additional Features** Ultra-light, anatomically shaped EVA one-piece sandal.

**UNISEX
BASICS**

BIRKENSTOCK®



Π129421 | 41-46 | 5,000 JPY
S 129423 | 36-41 | 5,000 JPY
ARIZONA EVA | BLACK | EVA
VALUE



0
Π1019094 | 41-46 | 5,000 JPY
S 1019152 | 36-41 | 5,000 JPY
ARIZONA EVA | KHAKI | EVA
VALUE



Π129441 | 41-46 | 5,000 JPY
S 129443 | 36-41 | 5,000 JPY
ARIZONA EVA | WHITE | EVA
VALUE



Π1015480 | 35-46 | 4,500 JPY
BARBADOS EVA | NAVY | EVA
VALUE



Π1015399 | 35-46 | 4,500 JPY
BARBADOS EVA | WHITE | EVA
VALUE



Π128201 | 35-46 | 5,000 JPY
GIZEH EVA | BLACK | EVA
VALUE



0
Π1019143 | 35-46 | 5,000 JPY
GIZEH EVA | KHAKI | EVA
VALUE



0
Π1019161 | 35-46 | 5,000 JPY
GIZEH EVA | NAVY | EVA
VALUE



Π128221 | 35-46 | 5,000 JPY
GIZEH EVA | WHITE | EVA
VALUE



Π1015487 | 35-46 | 4,000 JPY
HONOLULU EVA | BLACK | EVA
VALUE



Π1015489 | 35-46 | 4,000 JPY
HONOLULU EVA | NAVY | EVA
VALUE



Π1015488 | 35-46 | 4,000 JPY
HONOLULU EVA | WHITE | EVA
VALUE



S 128163 | 36-41 | 4,500 JPY
MADRID EVA | BLACK | EVA
VALUE



0
S 1019025 | 36-41 | 4,500 JPY
MADRID EVA | KHAKI | EVA
VALUE



S 128183 | 36-41 | 4,500 JPY
MADRID EVA | WHITE | EVA
VALUE

FOR INTERNAL USE ONLY

SPRING SUMMER 2021

CLASSIC | AUTHENTIC



00

1019097 | 41-46 | 5,000 JPY
 101912 | 36-41 | 5,000 JPY
 ARIZONA EVA | BOLD | MADE IN EVA
 VAL

0

1019049 | 35-43 | 4,000 JPY
 HONOLULU EVA | WATER
 VAL

**UNISEX
 TO THE BEACH**

- **Models** Arizona, Gizeh, Honolulu.
- **Upper Material** EVA.
- **Footbed** EVA.
- **Outsole** EVA.
- **Buckle/Closure** Classic Buckle.
- **Usage** Sea, pool & spa.
- **Newness** New Color – Watermelon, Bold Jade and true dynamic multi color option.
- **Additional Features** Ultra light, anatomically shaped EVA one-piece sandal.

UNISEX
TO THE BEACH

BIRKENSTOCK®



0

Π1019695 | 41-46 | 5,500 JPY
S 1019477 | 36-41 | 5,500 JPY
ARIZONA EVA | MULTI COLOR BOLD JADE (B
VIBRANT YELLOW/ WHITE) | EVA
VALUE



Π1001497 | 41-46 | 5,000 JPY
S 1001498 | 36-41 | 5,000 JPY
ARIZONA EVA | METALLIC ANTHRACITE | EVA
VALUE



Π1017046 | 36-41 | 5,000 JPY
ARIZONA EVA | PURPLE FOG | EVA
VALUE



0

S 1019522 | 36-41 | 5,000 JPY
ARIZONA EVA | WATERMELON | EVA
VALUE



0

Π1019158 | 35-43 | 5,000 JPY
GIZEH EVA | BOLD JADE | EVA
VALUE



Π1001505 | 35-46 | 5,000 JPY
GIZEH EVA | METALLIC ANTRACITE | EVA
VALUE



Π1017995 | 35-43 | 5,000 JPY
GIZEH EVA | PURPLE FOG | EVA
VALUE



0

Π1019121 | 35-43 | 5,000 JPY
GIZEH EVA | WATERMELON | EVA
VALUE



0-

Π1019074 | 35-43 | 4,000 JPY
HONOLULU EVA | BOLD JADE | EVA
VALUE



Π1016349 | 35-46 | 4,000 JPY
HONOLULU EVA | METALLIC ANTRACITE | EVA
VALUE



0-

Π1019055 | 35-43 | 4,000 JPY
HONOLULU EVA | PURPLE FOG | EVA
VALUE

★ MARKET HIGHLIGHT



00

Π101908 | 41-46 | 5,500 JPY
S1019382 | 36-41 | 5,500 JPY
ARIZONA EVA | MULTI COLOR MARBLE (BLACK/WHITE/RED) | EVA VALUE

01

Π1019172 | 35-46 | 4,500 JPY
BARBADOS EVA | VIBRANT YELLOW | EVA VALUE



Π1017997 | 41-46 | 5,000 JPY
S1017996 | 36-41 | 5,000 JPY
ARIZONA EVA | ACTIVE RED | EVA VALUE



02

Π1019100 | 41-46 | 5,000 JPY
S1019376 | 36-41 | 5,000 JPY
ARIZONA EVA | ULTRA BLUE | EVA VALUE



Π1014498 | 41-46 | 5,000 JPY
S1014611 | 36-41 | 5,000 JPY
ARIZONA EVA | VIBRANT YELLOW | EVA VALUE



Π1017718 | 35-46 | 4,500 JPY
BARBADOS EVA | ACTIVE RED | EVA VALUE



03

Π1019132 | 35-46 | 4,500 JPY
BARBADOS EVA | ULTRA BLUE | EVA VALUE

**UNISEX
TO THE GYM**

- Models: Arizona, Barbados.
- Upper Material: EVA.
- Footbed: EVA.
- Outsole: EVA.
- Buckle/Closure: Classic Buckle.
- Usage: Sea, pool & spa.
- Newness: New Color – Vibrant Yellow.
- Additional Features: Ultra light, anatomically shaped EVA one-piece sandal.



KIDS SPRING SUMMER 2021

Part and parcel of the accountability BIRKENSTOCK assumes for its youngest customers lies in providing the same high quality for them as for adults. But the German company goes beyond that, offering additional protection for little feet.

All the models in the Kids collection feature the premium cork/latex footbed that promotes comfortable development. The straps also feature a special design: particularly in the smaller sizes, they are broader at the sides. Many models incorporate a stabilizing heel strap as well.

For Spring/Summer Season 2021, the in-house creative team has brought to life exclusive new designs, exciting comic characters and eye catching graphics.



KIDS AUTHENTIC SPRING SUMMER 2021

Driven by its goal of delivering timelessly modern looks and extremely durable materials in the children's segment, BIRKENSTOCK is blazing new trails. Today these principles are often copied, yet their perfect implementation has yet to be duplicated. A case in point: the doublestrap Arizona, made of the in-house leather substitute Birko-Flor, has been cherished by generations of BIRKENSTOCK fans. This model has walked through the lives of many a wearer, from toddlerhood to golden years.

The Mocha option offered in the current Kids collection for Spring/Summer 21 Season serves as a prime specimen of excellent German craftsmanship – and deserves to be christened a design icon. Parents' hearts will swell as their little ones delight in wearing such famed classics. And they will delight in turn, knowing that their children's feet have a safe, healthy home on the anatomically shaped cork/latex footbed.

**BOYS
BIRKIBUC**

BIRKENSTOCK®

CORE ESSENTIAL
FOR KID & ADULT

CORE ESSENTIAL



S 55283 | 26-34 | 6,000 JPY
ARIZONA | BFBC MOCHA | BIRKIBUC
GOOD

S 87773 | 24-34 | 6,500 JPY
NEW YORK | BFBC NAVY
GOOD



FOR KID & ADULT

N1002362 | 30-34 | 6,000 JPY
GIZEH | BFBC MOCHA | BIRKIBUC
GOOD



CORE ESSENTIAL

N1005128 | 30-34 | 6,000 JPY
GIZEH | BFBC NAVY | BIRKIBUC
GOOD



CORE ESSENTIAL

S 552903 | 26-34 | 6,000 JPY
ARIZONA | BFBC NAVY | BIRKIBUC
GOOD



S 233073 | 24-34 | 6,500 JPY
ROMA | BFBC MOCHA | BIRKIBUC
GOOD



S 1007941 | 24-34 | 6,500 JPY
ROMA | BFBC NAVY | BIRKIBUC
GOOD



CORE ESSENTIAL

S 87783 | 24-34 | 6,500 JPY
NEW YORK | BFBC MOCHA | BIRKIBUC
GOOD

**BOYS
BIRKIBUC**

- **Model** Milano HL, New York, Roma, Arizona, Gizeh.
- **Upper Material** Birkenstock.
- **Footbed** Anatomically shaped cork-latex footbed with suede lining.
- **Outsole** EVA.
- **Buckle/Closure** Standard buckles + hook and loop.
- **Usage** Leisure.
- **Newness** Milano HL with Velcro hook & loop.



0
S 1019600 | 24-34 | 7,500 JPY
MILANO HL | BFBC MOCHA | BIRKIBUC
GOOD



0
S 1018742 | 24-34 | 7,500 JPY
MILANO HL | BFBC NAVY | BIRKIBUC
GOOD

SPRING SUMMER 2021

KIDS | AUTHENTIC

70

FOR INTERNAL USE ONLY



0

S 1018634 | 26-34 | 6,000 JPY
 GIZEH | BF DESERT SOIL CAMO KHAKI | BIRKO-FLOR
 GOOD

S 1017374 | 26-34 | 6,000 JPY
 ARIZONA | BF DESERT SOIL CAMO KHAKI
 GOOD



0

S 1019324 | 26-34 | 6,000 JPY
 ARIZONA | BF DESERT SOIL CAMO ALMOND | BIRKO-FLOR
 GOOD



S 1017378 | 24-34 | 6,500 JPY
 MILANO | BF DESERT SOIL CAMO KHAKI
 GOOD



00

S 1019034 | 24-34 | 6,500 JPY
 BIRMILANO | BF DESERT SOIL CAMO ALMOND | BIRKO-FLOR
 GOOD

**BOYS
 DESERT SOIL CAMO**

- **Models** Milano, Arizona, Gizeh.
- **Upper Material** Birko-Flor Desert Soil Camo.
- **Footbed** Anatomically shaped cork-latex footbed with suede lining.
- **Outsole** EVA.
- **Buckle/Closure** Standard buckles.
- **Usage** Leisure.
- **Newness** Sizeh and new Almond color.

VEGAN

FOR KID & ADULT
VEGAN



1018800 | 24-34 | 7,500 JPY
FLORIDA | BIRKO-FLOR WATERCOLOR FLOWER VEG | BIRKO-FLOR
GOOD

GIRLS WATERCOLOR FLOWER VEGAN

1018775 | 26-34 | 7,500 JPY
FLORIDA | BIRKO-FLOR WATERCOLOR FLOWER VEG | BIRKO-FLOR
GOOD

- Models: Florida, Rio.
- Upper Material: Birko-Flor.
- Footbed: Anatomically shaped cork-latex footbed with microfibre lining
- Outsole: EVA
- Buckle/Closures: Standard buckles.
- Newness: Vegan footbed, new handpainted watercolor flowers print on top.

SPRING SUMMER 21

VEGAN

VEGAN

VEGAN



101968 | 24-34 | 8,500 JPY
COLORADO | BIRKO-FLOR GRAINED LIGHT ROSE VEG | BIRKO-FLOR
GOOD

101883 | 24-34 | 8,500 JPY
COLORADO | BIRKO-FLOR GRAINED LIGHT ROSE VEG | BIRKO-FLOR
GOOD

1018731 | 26-34 | 7,500 JPY
ARIZONA | BIRKO-FLOR GRAINED POPCORN | BIRKO-FLOR
GOOD

GIRLS VEGAN FLOWERS



VEGAN

G+

1019634 | 26-34 | 7,500 JPY
ARIZONA | BIRKO-FLOR GRAINED POPCORN | BIRKO-FLOR
GOOD

- Models: Colorado, Arizona.
- Upper Material: Birko-Flor.
- Footbed: Anatomically shaped cork-latex footbed with printed watercolor flower print on top.
- Outsole: EVA.
- Buckle/Closures: Standard buckles + hook and loop.
- Usage: Leisure.
- Newness: Vegan footbed with new handpainted watercolor flowers print on top. New Upper Material.

KIDS | AUTHENTIC



KIDS INSPIRED SPRING SUMMER 2021

Modern girls and boys want to make their own decisions when it comes to the trends they like and the outfits they favor. The Inspired group in the BIRKENSTOCK Kids collection for Spring/Summer 2021 offers a tempting array of choices based on innovative finishing techniques applied to the Birko-Flor uppers of iconic sandal models.

BIRKENSTOCK®

CORE ESSENTIAL
FOR KID & ADULT

CORE ESSENTIAL
FOR KID & ADULT



S 555123 | 26-34 | 6,000 JPY
ARIZONA | BF BLACK | BIRKO-FLOR
G00

00

S 101863 | 30-34 | 6,500 JPY
KAIRO | BF BLACK | BIRKO-FLOR
G00

S 846141 | 26-34 | 6,000 JPY
GIZEH | BF BLACK | BIRKO-FLOR
G00



CORE ESSENTIAL

S 187603 | 24-34 | 6,500 JPY
NEW YORK | BF BLACK | BIRKO-FLOR

BOYS BIRKO-FLOR

- **Model** Kairo HL, New York, Gizeh, Arizona.
- **Upper Material** Birko-Flor.
- **Footbed** Anatomically shaped cork-latex footbed with suede lining .
- **Outsole** EVA.
- **Buckle/Closure** Standard buckles + hook and loop.
- **Usage** Leisure.
- **Newness** New Model Kairo HL with velcro closure for the younger kids.



**GIRLS
UNICORN**

- **Model** Florida, Colorado
- **Upper Material** Birko-Flor
- **Footbed** Anatomically shaped cork-latex footbed with suede lining
- **Outsole** EVA
- **Buckle/Closure** Standard buckles, hook and loop
- **Usage** Leisure
- **Newness** Color update on Unicorn Store

0
S 1018880 | 26-34 | 6,
FLORIDA | BIRKO-FLOR UNICORN SE
G00

0
S 1018847 | 24-34 | 7,
COLORADO | BIRKO-FLOR UNICORN SE
G00



**GIRLS
UNICORN FOOTBED**

- **Model** Rio, Gizel
- **Upper Material** Birko-Flor Patent
- **Footbed** Anatomically shaped cork-latex footbed with printed microfibre lining.
- **Outsole** Double layered EVA.
- **Buckle/Closure** Standard buckles.
- **Usage** Leisure.
- **Newness** New print on Microfibre footbed liner.

0
S 1018844 | 30-34 | 6,
GIZEL | BF PATENT WHITE / UNICORN |
G00

0
S 1018864 | 24-34 | 7,
RIO | BF PATENT WHITE / UNICORN |
G00

**GIRLS
ELECTRIC METALLIC**

BIRKENSTOCK®



00

Π101914 | 30-34 | 6,500 JPY
KAIRO HL | BF ELECTRIC METALLIC COPPER | BIRKO-FLO
GOOD

0

Π1019201 | 24-34 | 6,5
RIO | BF ELECTRIC METALLIC SILV
GOOD



0

Π1019159 | 30-34 | 6,000 JPY
GIZEH | BF ELECTRIC METALLIC SILVER | BIRI
GOOD



Π1012525 | 30-34 | 6,000 JPY
GIZEH | BF ELECTRIC METALLIC COPPER | BIRI
GOOD



0

Π1019176 | 30-34 | 6,500 JPY
KAIRO HL | BF ELECTRIC METALLIC SILVER | BIRKO-F
GOOD

**GIRLS
ELECTRIC METALLIC**

- **Models** Kairo HL, Arizona, Gizeh, Rio.
- **Upper Material** Birko-Flor.
- **Footbed** Anatomically shaped cork-latex footbed with suede lining.
- **Outsole** EVA.
- **Buckle/Closures** Standard buckles + hook and loop.
- **Usage** Leisure.
- **Newness** New model Kairo HL, Silver colorway with black outsole.



1015779 | 30-34 | 6.0
SIZE | BF COSMIC SPARKLE WHITE | BIRKENSTOCK®
BETT

1015658 | 24-34 | 6.0
RIO PLAIN | BF COSMIC SPARKLE W
BETT

GIRLS COSMIC SPARKLE

- **Model** Gizeh, Rio.
- **Upper Material** Birko-Flor.
- **Footbed** Anatomically shaped cork-latex footbed with suede lining.
- **Outsole** EVA.
- **Buckle/Closure** Standard buckles.
- **Usage** Leisure.
- **Newness** New colorway Candy Pink.



S 1017364 | 26-34 | 6,000 JPY
ARIZONA | BF DESERT SOIL BLUE RED | BIRKO-FLO
GOOD

S 1019076 | 24-34 | 7,500 JPY
PALU LOGO | BF DESERT SOIL BLUE
GOOD

S 101736 | 24-34 | 6,500 JPY
MILANO | BF DESERT SOIL BLUE RED | BIRKO-FLO
GOOD



00
S 1019451 | 26-34 | 6,000 JPY
ARIZONA | BF DESERT SOIL MOSS GREEN /
GOOD



00
S 1019473 | 24-34 | 6,500 JPY
MILANO | BF DESERT SOIL MOSS GREEN /
GOOD



0
S 1019089 | 24-34 | 7,500 JPY
PALU LOGO | BF DESERT SOIL MOSS GREEN / ORANGE
GOOD

BOYS DESERT SOIL

- **Model** Milano , Arizona, Palu Logo.
- **Upper Material** Birko-Flor.
- **Footbed** Anatomically shaped cork-latex footbed with suede lining.
- **Outsole** EVA.
- **Buckle/Closure** Standard buckles + hook and loop.
- **Usage** Leisure.
- **Newness** New color Moss Green, Palu added to the story.



1019095 | 24-34 | 7.5
 PALU | BIRKO-FLOR MONSTER OR
 BETT



1018989 | 24-34 | 7.5
 PALU | BIRKO-FLOR MONSTER ULTRAB
 BETT

**BOYS
 FUN PRINT**

- Model *Palu.*
- Upper Material *Birko-Flor.*
- Footbed *Anatomically shaped cork-latex footbed with suede lining.*
- Outsole *EVA.*
- Buckle/Closure *Buck and Loop.*
- Usage *Leisure.*
- Newness *New colors Orange and Ultrablue.*

★ MARKET HIGHLIGHT

★ MARKET HIGHLIGHT



0
 S 1019466 | 24-34 | 6,50 JPY.
 MOGAMI | BF ULTRABLUE-BLACK BLACK | BIRKO-FLOR
 BETT
 SEASON2

0
 S 1019672 | 24-34 | 6,50 | 26-34 | 6,50
 MOGAMI | BF ACID LIME-BLACK BLACK
 BETT
 SEASON

SPRING SUMMER 2021



0
 S 1019511 | 24-34 | 6,50 JPY.
 MOGAMI | BF PURPLE FOG PINK | BIRKO-FLOR
 BETT
 SEASON

0
 S 1019306 | 24-34 | 6,50
 MOGAMI | BF BLACK BLACK
 BETT
 SEASON

GIRLS & BOYS BASICS

- Model Mogami.
- Upper Material Birko-Flor.
- Footbed Anatomically shaped PU footbed.
- Outsole PU.
- Buckle/Closure Rust-proof Standard plastic buckles.
- Usage Outdoor: Playground, Forest, Mud, Grass.
- Newness New outsole, new production method, Birko-Flor upper with plastic buckles, new upper.
- Additional Features Highly functional & water-ready PU footbed. 2 components (Upper which is direct injected to PU outsole), Performance: Toe Bumper, Water-ready PU, Perfect Traction in all Terrain, Anti-slip.

KIDS | INSPIRED



S 128403 | 24-34 | 4,00 JPY
GIZEH KIDS | EVA | WHITE | EVA
VAL

O
S 1018924 | 26-34 | 4,00 JPY
ARIZONA KIDS | EVA | BLACK
VAL

**GIRLS & BOYS
TO THE PLAYGROUND**

- Models *Arizona, Gizeh, Rio, Milano.*
- Upper Material *EVA.*
- Footbed *EVA.*
- Outsole *EVA.*
- Buckle/Closure *Classic Buckle.*
- Usage *sea, pool & spa.*
- Newness *Arizona Kids.*

GIRLS & BOYS
EVA

BIRKENSTOCK®



S 128423 | 24-34 | 4,000 JPY
GIZEH KIDS EVA | BLACK | EVA
VALUE



S 1015464 | 24-34 | 4,000 JPY
GIZEH KIDS EVA | BEETROOT PURPLE | EVA
VALUE



0
S 1018941 | 26-34 | 4,000 JPY
ARIZONA KIDS EVA | WHITE | EVA
VALUE



0
S 1018925 | 26-34 | 4,000 JPY
ARIZONA KIDS EVA | ULTRA BLUE | EVA
VALUE



0
S 1018923 | 26-34 | 4,000 JPY
ARIZONA KIDS EVA | BEETROOT PURPLE | EVA
VALUE



0
S 1019686 | 24-34 | 4,000 JPY
ARIZONA KIDS EVA | PURPLE FOG | EVA
VALUE



0
S 1019458 | 24-34 | 4,500 JPY
MILANO KIDS EVA | WHITE | EVA
VALUE



S 1009353 | 24-34 | 4,500 JPY
MILANO KIDS EVA | BLACK | EVA
VALUE



0
S 1019502 | 24-34 | 4,500 JPY
MILANO KIDS EVA | ULTRA BLUE | EVA
VALUE



S 126113 | 24-34 | 4,500 JPY
RIO KIDS EVA | BLACK | EVA
VALUE



S 1015463 | 24-34 | 4,500 JPY
RIO KIDS EVA | BEETROOT PURPLE | EVA
VALUE



S 1018392 | 24-34 | 6,000 JPY
DERRY EVA | NAVY | EVA
VALUE



S 1006288 | 24-34 | 6,000 JPY
DERRY EVA | PINK | EVA
VALUE



S 1006284 | 24-34 | 6,000 JPY
DERRY EVA | SCUBA YELLOW | EVA
VALUE

FOR INTERNAL USE ONLY

SPRING SUMMER 2021

KIDS | INSPIRED



SHOES

SPRING SUMMER 2021

Each and every season, this group demonstrates anew the health benefits of integrating the anatomically shaped cork/latex footbed into shoes as well as sandals. As an added bonus, many models feature a removable footbed, making exchanging the footbed by a personalized one possible.

BIRKENSTOCK has succeeded in establishing a broad range of sneakers, classic lace up shoes and urban classics in this group. One of its most appealing features: material mixes that pair a variety of leathers, skin-friendly microfibers and other textiles to deliver comfortable, easy-care wearability.



SHOES LEISURE
SPRING SUMMER 2021

MARKET HIGHLIGHT



MARKET HIGHLIGHT



0

1019163 | 36-46 | 21,000 JPY
S 1019771 | 36-46 | 21,000 JPY
BEND LOW | SANDCASTLE | TEXTILE
BETTER

0

1019183 | 36-46 | 20,000 JPY
S 1019551 | 36-46 | 20,000 JPY
OSWEGO | MIDNIGHT
BETTER



0

1019180 | 36-46 | 21,000 JPY
S 1019723 | 36-46 | 21,000 JPY
BEND LOW | MIDNIGHT | TEXTILE
BETTER



0

1019162 | 36-46 | 20,000 JPY
S 1019550 | 36-46 | 20,000 JPY
OSWEGO | SANDCASTLE | TEXTILE
BETTER

SPRING SUMMER 2021

SHOES | LEISURE

UNISEX CUPSOLE/CANVAS

- **Models** Bend Low, Oswego.
- **Upper Material** Suede/Canvas Combi.
- **Footbed** Removable cork-latex footbed.
- **Outsole** Cork-PU boost/ cupsole.
- **Buckle/Closure** Lace-up, Slip-on.
- **Newness** New Model: Oswego. New colors and materials.
- **Additional Features** Cork-PU midsole offers shock absorption, the biomechanically tested shoe features a natural touch-down angle, stable flexibility in the forefoot, and a construction that keeps the foot in a natural and neutral position; breathable microfiber lining for improved moisture absorption.



M 101772 | 36-46 | 22,000 JPY
 S 101772 | 36-46 | 22,000 JPY
 BEND LOW | BLACK | NATURAL LEATHER
 BETTER

M 101772 | 36-46 | 22,000 JPY
 S 101772 | 36-46 | 22,000 JPY
 BEND LOW | WHITE | NATURAL LEATHER
 BETTER



M 1019762 | 36-46 | 23,000 JPY
 S 1019708 | 36-46 | 23,000 JPY
 BEND LOW | SILVER | NATURAL LEATHER
 BETTER

**UNISEX
CUPSOLE/SMOOTH LEATHER**

- **Model** Bend Low.
- **Upper Material** Smooth Leather.
- **Footbed** Removable cork-latex footbed.
- **Outsole** Cork-PU boost/cupsole.
- **Buckle/Closure** Lace-up.
- **Additional Features** Cork-PU midsole offers shock absorption, the biomechanically tested shoe features a natural touch-down angle, stable flexibility in the forefoot, and a construction that keeps the foot in a natural and neutral position; breathable microfiber lining for improved moisture absorption.



00

1019131 | 36-46 | 21,000 JPY
 1019368 | 36-46 | 21,000 JPY
**BEND LOW | SANDCASTLE | SUEDE/LEATHER
 BETT**

1017725 | 36-46 | 21,000 JPY
 1017726 | 36-46 | 21,000 JPY
**BEND LOW | FADED KHAKI | SUEDE/LEATHER
 BETT**

**UNISEX
 CUPSOLE/SUEDE**

- **Model** Bend Low.
- **Upper Material** Suede.
- **Footbed** Removable cork-latex footbed.
- **Outsole** Cork-PU boost/ cupsole.
- **Buckle/Closure** Lace-up.
- **Newness** New color and material updates.
- **Additional Features** Cork-PU midsole offers shock absorption, the biomechanically tested shoe features a natural touch-down angle, stable flexibility in the forefoot, and a construction that keeps the foot in a natural and neutral position; breathable microfiber lining for improved moisture absorption.



S 1017825 | 35-42 | 18,000 JPY
 BUCKLEY | BLACK | SUEDE LEATHER
 BETTI

S 1017825 | 35-42 | 18,000 JPY
 BUCKLEY | TEA | SUEDE
 BETTI

S 1017825 | 35-42 | 18,000 JPY
 BUCKLEY | GRAY TAUPE | SUEDE LEATHER
 BETTI

WOMEN DIRECT MOC/SUEDE

- Model Buckley.
- Upper Material Suede.
- Footbed Suede-covered cork-latex non-removable footbed.
- Outsole Repairable EVA outsole.
- Buckle/Closure Big Buckle.



0
 S 1019266 | 36-42 | 18,0
 SANTA ANA | NUBUCK | BLACK
 BETTI

S 101631 | 36-42 | 20,0
 TRACY | BLACK |
 BETTI

WOME
EVA-CORK/SUPER SOFT NUBUCK

- Model *Tracy, Santa Ana*
- Upper Material *Nubuck*
- Footbed *Removable cork-latex footbed*
- Outsole *EVA outsole*
- Buckle/Closure *Big Buckle, Elastic Straps*



S 101631 | 36-42 | 18,0
 SANTA ANA | BLACK
 BETTI

SPRING SUMMER 2021



WOME
EVA-CORK/SMOOTH LEATHER

- Model *Tracy.*
- Upper Material *Smooth Leather.*
- Footbed *Removable cork-latex footbed.*
- Outsole *EVA outsole.*
- Buckle/Closure *Big Buckle.*

S 1019727 | 36-43 | 21,0
 TRACY | SILVER | NATUR
 BETTI

SHOES | LEISURE



P166524 | 35-46 | 21,000
 S166528 | 35-46 | 21,000
 LONDON | BLACK | OILED LEATHER
 BETTER



P101946 | 35-46 | 22,000
 S101948 | 35-46 | 22,000
 LONDON | FADEO KHAKI | OILED LEATHER
 BETTER

P19926 | 35-46 | 21,000
 S19928 | 35-46 | 21,000
 MONTANA | BLACK | OILED LEATHER
 BETTER



P166531 | 35-46 | 21,000 JPY
 S166533 | 35-46 | 21,000 JPY
 LONDON | HABANA | OILED LEATHER
 BETTER



P1019702 | 35-46 | 21,000 JPY
 S1019781 | 35-46 | 21,000 JPY
 MONTANA | PECAN | OILED LEATHER
 BETTER



P1004850 | 35-46 | 21,000 JPY
 S1004851 | 35-46 | 21,000 JPY
 MONTANA | CUOIO | OILED LEATHER
 BETTER

UNISEX
HERITAGE/OILED LEATHER

- **Model** London, Montana.
- **Upper Material** Oiled Leather.
- **Footbed** Suede-covered non-removable cork-latex footbed.
- **Outsole** Repairable outsole, made of EVA(London) or PU(Montana).
- **Buckle/Closure** Standard Buckle, lace-up.



UNISE
HERITAGE/SUEDE

0 1010503 | 35-46 | 21,0
S 1010504 | 35-46 | 21,0
LONDON | TAUPE | SUEDE
BETT

- **Model** London
- **Upper Material** Suede.
- **Footbed** Suede-covered non-removable cork-latex footbed.
- **Outsole** Repairable outsole, made of EVA
- **Buckle/Closure** Standard Buckle

SPRING SUMMER 2021



0
S 1018997 | 35-46 | 21,0
S 1019101 | 35-46 | 21,0
LONDON | SANDCASTLE | OILED LEATHER
BETT

UNISE
HERITAGE/OILED LEATHER/SUEDE

0
S 1019009 | 35-46 | 21,0
S 1019004 | 35-46 | 21,0
LONDON | PECAN | OILED LEATHER
BETT

- **Model** London.
- **Upper Material** Suede/Oiled Leather.
- **Footbed** Suede-covered non-removable cork-latex footbed.
- **Outsole** Repairable outsole, made of EVA London.
- **Buckle/Closure** Standard Buckle.
- **Newness** New color and material combination updates in the Heritage Story.

SHOES | HERITAGE



1013439 | 35-46 | 18,0
 1013435 | 35-46 | 18,0
 GARY | BLACK | SUEDE LEATHER
 BETT



101923 | 36-46 | 18,0
 1019267 | 36-46 | 18,0
 GARY | FADED KHAKI | SUEDE
 BETT

**MEN
STRIDE/SUEDE**

- Model: Gary.
- Upper Material: Suede.
- Footbed: Built-in anatomical footbed.
- Outsole: Thermoplastic rubber outsole with cork-TR midsole.
- Buckle/Closure: Lace-up.
- Additional Features: Repairable outsole.



1017812 | 35-46 | 18,0
 1017813 | 35-46 | 18,0
 GARY | GINGER | SUEDE
 BETT



1019209 | 36-46 | 18,0
 1019283 | 36-46 | 18,0
 GARY | SOFT PINK | SUEDE
 BETT



1013431 | 36-42 | 20,0
 GARY | SILVER | NATURAL LEATHER
 BETT

**WOMEN
STRIDE/SMOOTH LEATHER**

- Model: Gary.
- Upper Material: Smooth Leather.
- Footbed: Built-in anatomical footbed.
- Outsole: Thermoplastic rubber outsole with cork-TR midsole.
- Buckle/Closure: Lace-up.
- Additional Features: Repairable outsole.

FOR INTERNAL USE ONLY



100
 r 1019154 | 36-46 | 22,000 JPY
 S 1019058 | 36-46 | 22,000 JPY
 PASADENA III | GRAY TAUPE | SUEDE LEATHER
 BETT

0
 r 1019116 | 36-46 | 22,000 JPY
 S 1019157 | 36-46 | 22,000 JPY
 PASADENA III | BLACK | SU
 BETT

MEN
ACE WALK/GRAINED LEATHER

- Model *Pasadena III.*
- Upper Material *Suede.*
- Footbed *Removable suede-covered cork-latex footbed.*
- Outsole *Thermoplastic rubber outsole with cork-TR welt.*
- Buckle/Closure *lace-up.*
- Newness *without lining for warm summer days.*



N1017777 | 40-46 | 23,000 JPY
 S1017775 | 40-46 | 23,000 JPY
 DALE | BLACK | NATURAL LEATHER
 BETTER

N1017771 | 40-46 | 23,000 JPY
 S1017772 | 40-46 | 23,000 JPY
 JAREN | BLACK | NATURAL LEATHER
 BETTER



N1017778 | 40-46 | 23,000 JPY
 S1017776 | 40-46 | 23,000 JPY
 DALEN | ESPRESSO | NATURAL LEATHER
 BETTER

N1017773 | 40-46 | 23,000 JPY
 S1017774 | 40-46 | 23,000 JPY
 JAREN | ESPRESSO | NATURAL LEATHER
 BETTER

MEN BUSINESS/SMOOTH LEATHER

- **Model** Jaren, Dalen.
- **Upper Material** Smooth Leather.
- **Footbed** Removable cork-latex footbed.
- **Outsole** Thermoplastic Rubber.
- **Buckle/Closure** Lace-up.
- **Additional Features** The water-resistant shoe features a supple, premium, hydrophobic leather upper, waxed yarn stitching, a skid proof, weather-resistant rubber outsole, a breathable microfiber lining for improved moisture absorption, and a removable cork-latex footbed.



S 101780 | 36-42 | 22,000 JPY
 LARAMIE LOW | SAND | NATURAL LEATHER
 BETTER

S 101782 | 36-42 | 22,000 JPY
 SAUNDERS | BLACK | NATURAL LEATHER
 BETTER
 付属：アッパーと同色のシューレース・リボン



S 1006908 | 36-42 | 22,000 JPY
 LARAMIE LOW | BLACK | NATURAL LEATHER
 BETTER

S 1017824 | 36-42 | 22,000 JPY
 SAUNDERS | BROWN | NATURAL LEATHER
 BETTER
 付属：アッパーと同色のシューレース・リボン

**WOMEN
 BUSINESS/SUPER SOFT
 SMOOTH LEATHER**

- Model: Laramie Low, Saunders.
- Upper Material: Super soft smooth leather.
- Footbed: Removable suede-covered cork-latex footbed.
- Outsole: Thermoplastic Rubber.
- Buckle/Closure: Lace-up.



PAPILLIO SPRING SUMMER 2021

In this fashionably ambitious and subtly extravagant women's collection, PAPILLIO's in-house creative team presents highly versatile takes on the subject of sandals. The season's design interpretations range from statement plateau soles to lovable and lovely wedge-heeled sandalettes that radiate femininity. Within the SS21 season the PAPILLIO family gets new members. The new Platform wedge with its 1.5cm heel pitch offers it all, a nice heel as well as a cool platform.

As in the last collections also in season Spring/Summer 2021 the team has incorporated upper materials from the BIRKENSTOCK product range alongside its own designs. These include famous Birko-Flor and super-supple leather with thicknesses up to 3 mm, some of which is finished as pull-up leather that gains a vintage look and its own personalized patina over time.

Walking comfort is top priority in the PAPILLIO models as well. Therefore the anatomy of the wedge footbeds made of cork/latex respectively polyurethane are adapted from BIRKENSTOCK and specially modified for wedge heels. And the angle of the foot remains comfortably moderate – no matter how high the heel rise.



PAPILLIO AUTHENTIC SPRING SUMMER 2021

At PAPILLIO, leather, Birko-Flor uppers, EVA respectively TPU soles, and the anatomically shaped cork/latex respectively polyurethane footbed are the ingredients for designs. While this recipe may sound straightforward, the in-house creative team excels at coming up with endless variations.

For Spring/Summer 2021, the PAPILLIO creative team gained inspiration in the beauty of nature. Natural components like super soft nubuck leathers, oiled leathers as well as pull-up. The high qualitative wedges are getting even more feminine with the new Ring-Buckle.



S 1018565 | 36-43 | 20,000 JPY
**SIBYL RING-BUCKLE | GINGER BROWN | LEATHER
 BETT**

S 1018549 | 36-43 | 20,000 JPY
**SAMIRA RING-BUCKLE | BLACK
 BETT**

WOMEN PURE LEATHER

- **Models** Mary Ring-Buckle, Samira Ring-Buckle, Sibyl-Ring Buckle, Soley Ring-Buckle, Lana, Tessa.
- **Upper Material** Leather.
- **Footbed** Suede-covered PU Footbed (Mary, Samira, Sibyl und Soley), suede-covered Cork-Latex footbed (Lana, Tessa).
- **Outsole (Wedge for PAPILLIO)** Cork-PU wedge with TPU outsole (Mary, Samira, Sibyl, Soley), 2cm Cork-Latex Wedge with EVA Outsole (Lana, Tessa).
- **Buckle/Closure** Ring-Buckle (Mary, Samira, Sibyl, Soley), Standard Buckle (Lana, Tessa).
- **Newness** New PAPILLIO buckle: Finer buckle to support the brands feminine approach. Additionally all 4cm wedge sandals are now available in the contemporary but timeless new colorway ginger brown. The new model Sibyl completes the Pure Leather group by offering the perfect mixture of adjustability and coverage.

**WOMEN
PURE LEATHER**

papillio



S 1018570 | 36-43 | 20,000 JPY
SOLEY RING-BUCKLE | GINGER BROWN | LEASOLEY RING-BUCKLE | BLACK | LEATHER
BETTER



S 1018522 | 36-43 | 20,000 JPY
LEASOLEY RING-BUCKLE | BLACK | LEATHER
BETTER



S 1018677 | 36-43 | 20,000 JPY
SIBYL RING-BUCKLE | BLACK | LEATHER
BETTER



S 1018571 | 36-43 | 20,000 JPY
SAMIRA RING-BUCKLE | GINGER BROWN |



S 1018555 | 36-43 | 22,000 JPY
LEMARY RING-BUCKLE | GINGER BROWN |



S 1018523 | 36-43 | 22,000 JPY
LEATMARY RING-BUCKLE | BLACK | LEATHER
BETTER



S 1008774 | 35-43 | 14,000 JPY
LANA | COGNAC | LEATHER
BETTER



S 1013159 | 35-43 | 14,000 JPY
LANA | BLACK | LEATHER
BETTER



S 1015823 | 36-43 | 13,000 JPY
TESSA | COGNAC | LEATHER
BETTER



S 1015824 | 36-43 | 13,000 JPY
TESSA | BLACK | LEATHER
BETTER

SPRING SUMMER 2021

PAPILLIO | AUTHENTIC



0
 S 1019545 | 36-43 | 22,000 JPY
 MARY RING-BUCKLE | SANDCASTLE | NUBUCK
 BETT

0
 S 1018421 | 36-43 | 20,000 JPY
 SOLEY RING-BUCKLE | SANDCASTLE | NUBUCK
 BETT



00
 S 1018374 | 36-43 | 20,000 JPY
 NAMICA RIVETS | SANDCASTLE | NUBUCK
 BETTER

WOMEN NUBUCK

- **Models** Mary Ring-Buckle, Soley Ring-Buckle, Namica Rivets.
- **Upper Material** nubuck.
- **Footbed** suede-covered PU footbed (Mary, Soley, Namica).
- **Outsole** 4cm Cork-PU wedge with TPU outsole.
- **Buckle/Closure** Mary and Soley Ring-Buckle.
- **Newness** New PAPILLIO buckle: Finer buckle to support the brands feminine approach. The new PAPILLIO own buckle lifts the 4cm wedge items on a new level of femininity. Matching feminine rivets on Namica to present fine embellishments.



PAPILLIO INSPIRED SPRING SUMMER 2021

Another important segment for the in-house creative team is working on trends and new developments. PAPILLIO models may always form the foundation, but in PAPILLIO's own atelier, they serve as jumping-off points for prototypes featuring fresh designs and styles.

At the same time PAPILLIO manages to come up with trendy colors and effects as well as timeless new styles. within this summer collection PAPILLIO not only launches the new 1.5 cm platform wedge but also uses a new canvas material to create a very summerly product range.



**WOMEN
TEXTURE MIX**

- **Model** Glenda, Gabriela Canvas
- **Upper Material** Texture Mix (Suede Canvas)
- **Footbed** Anatomical shaped, leather footbed integrated in cork-PU wedge.
- **Outsole** New 1,5cm Platform Wedge EVA made from Cork PU.
- **Buckle/Closure** Standard Buckle
- **Newness** New 1.5cm Platform Wedge, summerly canvas upper material.
- **Additional Features** the wedge offers an integrated anatomical shaped leather footbed, high stability, comfort completes every feminine outfit.



00
S | 101849 | 36-43 | 18,0
GLENDA | FADED KHAKI | BETA



00
S | 101952 | 36-43 | 17,0
GABRIELA CANVAS | ANTHRA BETA

SPRING SUMMER 21

PAPILLIO | INSPIRED

**WOMEN
NUBUCK**

- **Model** Soley Ring-Buckle, Namica Rivets
- **Upper Material** Nubuck
- **Footbed** Suede-covered PU footbed.
- **Outsole** 1cm Cork-PU wedge with TPU outsole.



0
S | 101844 | 36-43 | 20,0
NAMICA RIN | SOFT PINKRIN BETA

0
S | 1018440 | 36-43 | 20,0
SOLEY RING-BUCKLE | SOFT F BETA

- **Buckle/Closure** Ring-Buckle (Soley)
- **Newness** New PAPPILLIO buckle: Finer buckle to support the brands feminine approach. Matching feminine rivets on Namica.



VEGAN

VEGAN

VEGAN

0
 S 1018558 | 35-43 | 10,0
 ARIZONA GROOVED | WHITE |
 G00

0
 S 1018559 | 35-43 | 10,0
 GIZEH GROOVED | WHITE |
 G00

00
 S 1018526 | 35-43 | 10,0
 GIZEH GROOVED | BLACK | BIRKO-FLOR
 G00

WOME
PLATFORM VEGAN

- Models Arizona, Gizeh.
- Inner Material Vegan Birko-Flor, Birkibuc.
- Footbed Vegan microfiber-covered Cork
 Latex footbed
- Outsole (Wedge for PAPIL) Birko-Flor
 EVA Platform Outsole
- Buckle/Closure Standard Buckle
- Newness Additional colorways Mocca



VEGAN

0
 S 1018520 | 35-43 | 10,0
 ARIZONA GROOVED | BLACK
 G00



VEGAN

0
 S 1019528 | 35-43 | 10,0
 ARIZONA GROOVED | BIRKIBUC M
 G00



WOME
CHUNKY SUEDE

- Models Arizona
- Inner Material Suede
- Footbed "On Steam" –covered Cork-Latex footbed.
- Outsole (Wedge for PAPIL) Chunky platform outsole 32mm.

00
 S 1014920 | 35-43 | 16,0
 ARIZONA CHUNKY | BLACK | S
 BETT

00
 S 1018725 | 35-43 | 16,0
 ARIZONA CHUNKY | SOFT PINK |
 BETT

- Buckle/Closure Standard Buckle
- Newness New seasonal color updates with monochrome buckles to create a cool colorblocking look between the colored footbed and the chunky sole.



00

0018377 | 35-43 | 14,1 | 10 JPY
 ARIZONA | METALLIC ANTHRACITE | LEATHER
 BETT

0

0018375 | 35-43 | 14,1
 ARIZONA | METALLIC PLATINUM
 BETT

WOMEN
LEATHER METALLIC

- Model Arizona.
- Upper Material Leather Metallic.
- Footbed Suede covered Cork-Latex footbed.
- Outsole (Wedge for PAPILENO) Platform.
- Buckle/Closure Standard Buckle.
- Newness New crinkled metallic leather.



LEGWEAR SPRING SUMMER 2021

Far from being a fashion faux pas, sandals worn with socks have been a veritable fashion statement for some time now!

The legwear collection has plenty to offer for that authentic BIRKENSTOCK look.

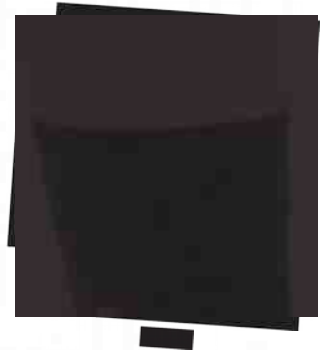
Individual features such as certified organic cotton or footbed reinforcement in the sole make each pair an extraordinary product that takes into account the personal needs of its wearer. In addition to the feminine features at the cuff and the cool ethno patterns, the women's collection also boasts summery materials. Besides the blends of linen, high-quality blends of silk ensure a pleasant foot climate in the shoes.

For men, we have reinterpreted our coarsely knitted classic Cotton Slub with a finer design and the use of silk. The extra length at the shaft and the tennis look result in a modern socks and sandals look. The use of a light blend of linen and seasonal ethno patterns make for a genuine highlight and round off the men's collection.

BIRKENSTOCK®



1002447 | 36/38 | 1,800 JPY
COTTON SOLE



1002447 | 36/38 | 1,800 JPY
COTTON SOLE



1002468 | 36/38 | 1,800 JPY
COTTON SOLE | ANTHRACITE



1006131 | 36/38 | 1,800 JPY
COTTON SOLE | NAVY



1002471 | 36/38 | 1,800 JPY
COTTON SOLE | DARK BROWN MEL



1002472 | 36/38 | 1,800 JPY
COTTON SOLE | JEANS MEL



1002473 | 36/38 | 1,800 JPY
COTTON SOLE | BEIGE MEL



1002474 | 36/38 | 1,800 JPY
COTTON SOLE | WHITE

**WOMEN
COTTON SOLE**

- Models *Cotton Sole.*
- Material *83% CO 16% PA, 1% EL.*
- Functionality/innovation *BIRKENSTOCK Footbed Comfort Sole, hand-linked toe seam, certified organic cotton.*
- Newness *CORE.*
- Story inspiration *Casual business sock with extra comfort thanks to the organic cotton and the BIRKENSTOCK Footbed Comfort Sole.*

SPRING SUMMER 2021

LEGWEAR | AUTHENTIC

BIRKENSTOCK®



100247 | 36/38 | 2,250 JPY
COTTON SOLE SNEAKER | BEIGE

100247 | 36/38 | 2,250 JPY
COTTON SOLE SNEAKER | WHITE



100248 | 39/41, 42/44 | 2,250 JPY
COTTON SOLE SNEAKER | GRAY MELANGE

100248 | 39/41, 42/44 | 2,250 JPY
COTTON SOLE SNEAKER | CAMEL MELANGE

**WOMEN & MEN
COTTON SOLE SNEAKER**
2足パック

- **Model:** Cotton Sole Sneaker.
- **Material:** 82% CO, 17% PA, 1% EL.
- **Functionality/innovation:** **BIRKENSTOCK** Footbed Comfort Sole, hand-linked toe seam, certified organic cotton.
- **Newness:** CORE.
- **Story inspiration:** Casual Sneaker sock with extra comfort thanks to the organic cotton and the **BIRKENSTOCK** Footbed Comfort Sole.



1002574 | 39/41, 42/44 | 2,250 JPY
COTTON SOLE SNEAKER | WHITE



1002585 | 39/41, 42/44 | 2,250 JPY
COTTON SOLE SNEAKER | BLACK

FOR INTERNAL USE ONLY

SPRING SUMMER 2021

LEGWEAR | AUTHENTIC



Made with organic materials
Certified by Ecocert Greenlife
Lic. 168925

100972 | 36/38 | 1,200 JPY
COTTON SOLE INVISIBLE | BLACK



Made with organic materials
Certified by Ecocert Greenlife
Lic. 168925

101792 | 36/38 | 1,200 JPY
COTTON SOLE INVISIBLE



Made with organic materials
Certified by Ecocert Greenlife
Lic. 168925

1009829 | 36/38 | 1,200 JPY
COTTON SOLE INVISIBLE | WHITE



Made with organic materials
Certified by Ecocert Greenlife
Lic. 168925

1018310 | 36/38 | 1,200 JPY
COTTON SOLE INVISIBLE | GRAY



Made with organic materials
Certified by Ecocert Greenlife
Lic. 168925

100972 | 36/38 | 1,200 JPY
COTTON SOLE INVISIBLE | BLACK



Made with organic materials
Certified by Ecocert Greenlife
Lic. 168925

100972 | 36/38 | 1,200 JPY
COTTON SOLE INVISIBLE | WHITE



Made with organic materials
Certified by Ecocert Greenlife
Lic. 168925

101792 | 39/41, 42/44 | 1,200 JPY
COTTON SOLE INVISIBLE | BEIGE



Made with organic materials
Certified by Ecocert Greenlife
Lic. 168925

1018279 | 39/41, 42/44 | 1,200 JPY
COTTON SOLE INVISIBLE | GRAY



Made with organic materials
Certified by Ecocert Greenlife
Lic. 168925

1009720 | 39/41, 42/44 | 1,200 JPY
COTTON SOLE INVISIBLE | BLUE

WOMEN & MEN COTTON SOLE INVISIBLE

- Model: Cotton Sole Invisible.
- Material (upper, insole, outsole, back): 16% PA, 1% EL.
- Functionality/innovation: **BIRKENSTOCK Footbed Comfort Sole**, hand-linked toe seam, certified organic cotton, knitted bandage in the foot area and additional silicon inserts at the heel to prevent slipping, no show in shoes.
- Newness: **CORE.**
- Story inspiration: **Casual invisible sock with extra comfort thanks to the organic cotton and the **BIRKENSTOCK Footbed Comfort Sole.****

BIRKENSTOCK®



██████████ 250 JPY
██████████ BLACK

██████████ 250 JPY
██████████ GRAY

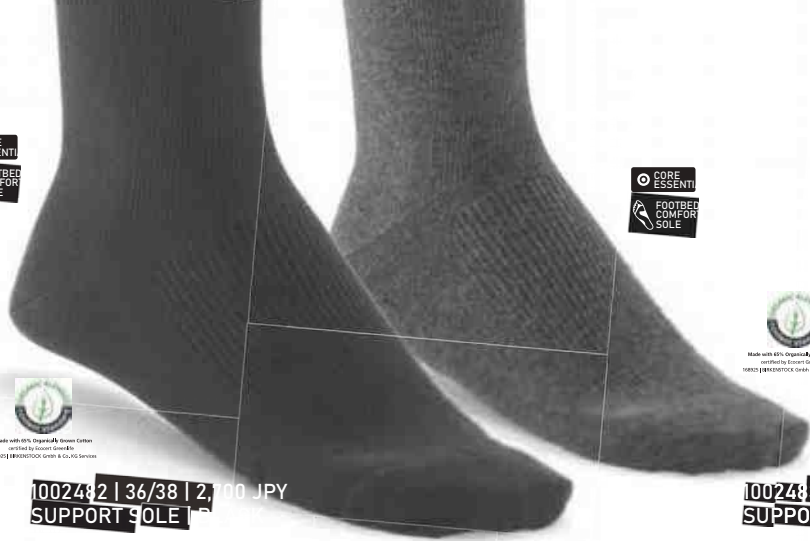
SCORE ESSENTI



1002494 | 36/38 | 2,250 JPY
COTTON SPLIT | BEIGE MELANGE

WOMEN COTTON SPLIT

- **Model** Cotton Split.
- **Material** 7% CO, 20% PA, 3% EL.
- **Functionality/innovation** Anatomically-knitted socks with separate section for big toe, certified organic cotton.
- **Newness** CORE.
- **Story inspiration** Socks to match one of the BIRKENSTOCK bestseller models, Gizeh.



Made with 65% Organically Grown Cotton certified by Ecocert GreenLife. 100% BIRKENSTOCK GREEN & CO. 100 SERVICE



Made with 65% Organically Grown Cotton certified by Ecocert GreenLife. 100% BIRKENSTOCK GREEN & CO. 100 SERVICE

1002432 | 36/38 | 2,700 JPY
SUPPORT SOLE | ANTHRACITE

1002433 | 36/38 | 2,700 JPY
SUPPORT SOLE | ANTHRACITE



Made with 65% Organically Grown Cotton certified by Ecocert GreenLife. 100% BIRKENSTOCK GREEN & CO. 100 SERVICE

1002484 | 36/38 | 2,700 JPY
SUPPORT SOLE | NAVY



Made with 65% Organically Grown Cotton certified by Ecocert GreenLife. 100% BIRKENSTOCK GREEN & CO. 100 SERVICE

1002485 | 36/38 | 2,700 JPY
SUPPORT SOLE | DARK BROWN



Made with 65% Organically Grown Cotton certified by Ecocert GreenLife. 100% BIRKENSTOCK GREEN & CO. 100 SERVICE

1002754 | 36/38 | 2,700 JPY
SUPPORT SOLE | WHITE



Made with 65% Organically Grown Cotton certified by Ecocert GreenLife. 100% BIRKENSTOCK GREEN & CO. 100 SERVICE



Made with 65% Organically Grown Cotton certified by Ecocert GreenLife. 100% BIRKENSTOCK GREEN & CO. 100 SERVICE

1002579 | 39/41, 42/44 | 2,700 JPY
SUPPORT SOLE | ANTHRACITE

1002580 | 39/41, 42/44 | 2,700 JPY
SUPPORT SOLE | ANTHRACITE



Made with 65% Organically Grown Cotton certified by Ecocert GreenLife. 100% BIRKENSTOCK GREEN & CO. 100 SERVICE

1002578 | 39/41, 42/44 | 2,700 JPY
SUPPORT SOLE | BLACK



Made with 65% Organically Grown Cotton certified by Ecocert GreenLife. 100% BIRKENSTOCK GREEN & CO. 100 SERVICE

1002581 | 39/41, 42/44 | 2,700 JPY
SUPPORT SOLE | DARK BROWN MELANGE



Made with 65% Organically Grown Cotton certified by Ecocert GreenLife. 100% BIRKENSTOCK GREEN & CO. 100 SERVICE

1002753 | 39/41, 42/44 | 2,700 JPY
SUPPORT SOLE | WHITE

WOMEN & MEN
SUPPORT SOLE

- Model: **Support Sole.**
- Material: **65% CO, 27% PA, 8% EL.**
- Functionality/innovation: **one-length compression socks with BIRKENSTOCK Footbed Comfort Sole, certified organic cotton.**
- Newness: **SCORE.**

SPRING SUMMER 2021

LEGWEAR | AUTHENTIC



100243 | 36/38 | 1,950 JPY
COTTON S | BLACK GRAY



1002436 | 36/38 | 1,950 JPY
COTTON SLUB | GRAY WHITE

**WOMEN
COTTON SLUB**

- **Model:** Cotton Slub
- **Material:** 74% CO, 4% PA, 2% EL.
- **Functionality/innovation:** Heavy-knit structure to keep feet warm, special "slub yarn" with irregular thickness along the threads.
- **Newness:** CORE
- **Story inspiration:** Casual heavy-knit sock.



100247 | 36/38 | 1,950 JPY
COTTON TW | BROWN



100244 | 36/38 | 1,950 JPY
COTTON TW | LIGHT GRAY

**WOMEN
COTTON TWIST**

- **Model:** Cotton Twist.
- **Material:** 66% CO, 2% PA, 2% EL.
- **Functionality/innovation:** Tough, heavy-knit structure to keep feet warm.
- **Newness:** CORE
- **Story inspiration:** Authentic socks in a cozy look.



SPRING SUMMER 2021



1002521 | 39/41, 42/44 | 1,800 JPY
COTTON SOLE | BLACK



1002532 | 39/41, 42/44 | 1,800 JPY
COTTON SOLE | ANTHRACITE



1002543 | 39/41, 42/44 | 1,800 JPY
COTTON SOLE | NAVY



1002554 | 39/41, 42/44 | 1,800 JPY
COTTON SOLE | MIDGRAY MELANGE



1002565 | 39/41, 42/44 | 1,800 JPY
COTTON SOLE | DARK BROWN MELANGE



1002582 | 39/41, 42/44 | 1,800 JPY
COTTON SOLE | JEANS MELANGE

MEN
COTTON SOLE

- Models *Cotton Sole*.
- Material **83% CO 16% PA, 1% EL**.
- Functionality/innovation **BIRKENSTOCK**
Footbed Comfort Sole, hand-linked toe seam, certified organic cotton.
- Newness **CORE**.
- Story inspiration **Casual business sock**
with extra comfort thanks to the organic cotton and the BIRKENSTOCK Footbed Comfort Sole.



1002583 | 39/41, 42/44 | 1,800 JPY
COTTON SOLE | CAMEL MELANGE



1002584 | 39/41, 42/44 | 1,800 JPY
COTTON SOLE | WHITE

CORE ESSENTI



CORE ESSENTI

100253 | 39/41, 42/44 | 1,950 JPY
COTTON SLUB | BEIGE

100254 | 39/41, 42/44 | 1,950 JPY
COTTON SLUB | BLUE

MEN
COTTON SLUB

- **Model**Cotton Slub.
- **Material**64% CO; 4% PA; 2% EL.
- **Functionality/innovation**Heavy-knit structure to keep feet warm, special “slub yarn” with irregular thickness along the threads.
- **New features**CORE.
- **Story inspiration**Casual heavy-knit sock.

CORE ESSENTI



100255 | 39/41, 42/44 | 1,950 JPY
COTTON SLUB | BLACK GRAY

CORE ESSENTI



1002533 | 39/41, 42/44 | 1,950 JPY
COTTON SLUB | GRAY WHITE

CORE ESSENTI



CORE ESSENTI

1002548 | 39/41, 42/44 | 1,950 JPY
COTTON TWIST | BEIGE

100257 | 39/41, 42/44 | 1,950 JPY
COTTON TWIST | BLUE

CORE ESSENTI



100257 | 39/41, 42/44 | 1,950 JPY
COTTON TWIST | BLACK

CORE ESSENTI



100258 | 39/41, 42/44 | 1,950 JPY
COTTON TWIST | BROWN

MEN
COTTON TWIST

- **Model**Cotton Twist.
- **Material**66% CO, 2% PA, 2% EL.
- **Functionality/innovation**Tough, heavy-knit structure to keep feet warm.
- **Newness**CORE
- **Story inspiration**Authentic socks in a cozy look.

FOR INTERNAL USE ONLY

BIRKENSTOCK®



BOY
TWIST HSH

100765 | 27/29, 30/32, 33/35 | 1,800 JPY
TWIST HSH | FORMULA ONE

- **Model** Twist HSH (Home Sweet Home)
- **Material** 96% CO, 2% PA, 2% EL

100769 | 27/29, 30/32, 33/35 | 1,800 JPY
TWIST HSH | SKINIVER

- **Functionality/innovation** Rough, heavy-knit structure to keep feet warm, non-slip ABS sole in the Original BIRKENSTOCK sole pattern.
- **New feature** Carry-over model.
- **Story inspiration** Authentic cozy look sock.



BOY
SLUB BLOCK

100768 | 27/29, 30/32, 33/35
SLUB BLOCK |

- **Model** Slub Block
- **Material** 92% CO, 6% PA, 2% EL
- **Functionality/innovation** Heavy-knit structure to keep feet warm, special "slub-yarn" with irregular thickness along the thread.
- **Newness** Carry-over model

100768 | 27/29, 30/32, 33/35
SLUB BLOCK | S

- **Story inspiration** Casual, heavy-knit socks, 2-tone colorway.

SPRING SUMMER 2021

LEGWEAR | AUTHENTIC

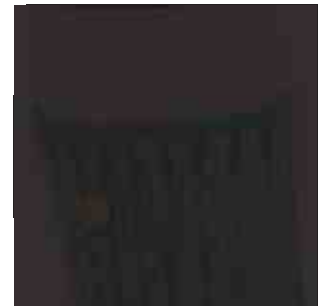


GIRLS
TWIST HSH

1007649 | 27/29, 30/32, 33/35
TWIST HSH | MARS RED

- **Model** Twist HSH (Home Sweet Home)
- **Material** 86% CO, 2% PA, 2% EL.
- **Functionality/innovation** Tough, heavy-knit structure to keep feet warm, non-slip ABS sole in the Original BIRKENSTOCK sole pattern.
- **New features** Carry-over model.
- **Story inspiration** Authentic cozy look sock.

100764 | 27/29, 30/32, 33/35 | 1,800 JPY
TWIST HSH | CHRYSTAL PINK



GIRLS
SLUB BLOCK

1007647 | 27/29, 30/32, 33/35
SLUB BL | DCK | NI

- **Model** Slub Block
- **Material** 82% CO, 6% PA, 2% EL
- **Functionality/innovation** Heavy-knit structure to keep feet warm, special "slub-yarn" with irregular thickness along the thread.
- **Newness** Carry-over model.
- **Story inspiration** Casual, heavy-knit socks, 2-tone colorway.

100764 | 27/29, 30/32, 33/35 | 1,500 JPY
SLUB BL | DESERT | RT ROSE



0
 1018973 | 36/38 | 1,950 JPY
 STRUCTURED DOT | SOFT PINK

0
 1018974 | 36/38 | 1,950 JPY
 STRUCTURED DOT | DUSTY TEAL



0
 1018980 | 36/38 | 1,950 JPY
 STRUCTURED DOT | EGGSHELL



0
 1018982 | 36/38 | 1,950 JPY
 STRUCTURED DOT | MIDNIGHT

**WOMEN
 STRUCTURED DOT**

- **Model** Structured Dot Sock.
- **Material** 83% CO, 16% PA, 1% EL.
- **Newness** New upper material.
- **Additional Features** SCRA for perfect fit, pressure-free elasticated ribbing, flat toe section for optimum comfort, additional knitted binding in the leg area for a perfect fit.

BIRKENSTOCK®



0
1018957 | 36/38 | 2,250 JPY
LINEN ETHNO | WH

00
1018976 | 36/38 | 2,250 JPY
LINEN ETHNO | SOFT PINK



00
1018961 | 36/38 | 2,250 JPY
LINEN ETHNO | EGGSHELL



00
1018879 | 36/38 | 2,250 JPY
LINEN ETHNO | FADED KHAKI



0
1018911 | 39/41, 42/44 | 2,250 JPY
ETHNO LINEN SOCK | EGGSHELL

00
1018912 | 39/41, 42/44 | 2,250 JPY
ETHNO LINEN SOCK | FADED KHAKI



00
1018915 | 39/41, 42/44 | 2,250 JPY
ETHNO LINEN SOCK | MIDNIGHT

**WOMEN & MEN
LINEN ETHNO**

- **Model:** Linen Ethno Sock.
- **Material:** 44% CO, 32% Viscose, 12% LI, 10% PA, 2% EL.
- **Newness:** Exclusive linen / viscose Yarn.
- **Additional Features:** Exclusive linen/viscose Yarn, light and temperature-regulating, pressure-free, elasticated cuff for perfect grip on the leg, Lycra for perfect fit, Flat toe section for optimum comfort.



00
1018876 | 39/41, 42/44 | 2,250 JPY
ETHNO LINEN SOCK | WHALE GRAY

FOR INTERNAL USE ONLY

SPRING SUMMER 2021

LEGWEAR | INSPIRED



0
1018935 | 39/41, 42/44 | 1,950 JPY
STRUCTURED SLUB | EGGSHELL

0
1018936 | 39/41, 42/44 | 1,950 JPY
STRUCTURED SLUB | BLACK



0
1018909 | 39/41, 42/44 | 1,950 JPY
STRUCTURED SLUB | MIDNIGHT



0
1018962 | 39/41, 42/44 | 1,950 JPY
STRUCTURED SLUB | WHALE GRAY

MEN STRUCTURED SLUB

- **Model** Structured Slub Sock.
- **Material** 88% CO, 10% PA, 2% EL.
- **Newness** Our Iconic Style Slub reinvented. *BITTE klarer formulieren wie neue Farben, neuer schnitt , neue Muster etc.*
- **Additional Features** *ECRA for perfect fit, pressure-free elasticated ribbing, flat toe section for optimum comfort, additional knitted binding in the leg area for a perfect fit.*



0
1018990 | 36/38 | 2,700 JPY
SILKY SLUB | MIDNIGHT

100
1018991 | 36/38 | 2,700 JPY
SILKY SLUB | WHALE GRAY



0
1019001 | 36/38 | 2,700 JPY
SILKY SLUB | EGGSHELL



0
1019002 | 36/38 | 2,700 JPY
SILKY SLUB | DARK MAUVE



0
1019943 | 36/38 | 2,700 JPY
SILKY SLUB | EGGSHELL

100
1019923 | 36/38 | 2,700 JPY
SILKY SLUB | WHALE GRAY



0
1019717 | 36/38 | 2,700 JPY
SILKY SLUB | MIDNIGHT



0
1019941 | 36/38 | 2,700 JPY
SILKY SLUB | DARK MAUVE

**MEN & WOMEN
SILKY SLUB MEN**

- **Model** Silky Slub.
- **Material** 72% CO, 18% PA, 8% S, 2% EL
- **Newness** High-quality silk content.
- **Additional Features** Natural foot climate due to high-quality silk content and its natural cooling effect.

FOR INTERNAL USE ONLY

SPRING SUMMER 2021

LEGWEAR | AUTHENTIC



BELTS SPRING SUMMER 2021

AUTHENTIC QUALITY MADE IN GERMANY

Made to last - these words embody the BIRKENSTOCK belt collection.

Each belt is traditionally crafted and made of premium-quality vegetable-tanned full-grain leather that will accompany its wearer for a lifetime, providing a natural patina of elegance throughout the years. All designs, buckles and materials are crafted in the style of our popular sandals and shoes for an uncompromising look and feel.

The belts also come on classic and seasonal colors, with a broad range of styles that cater to a variety of tastes. Whether pairing it with a timeless, understated ensemble or with a high-fashion outfit for a night on the town. BIRKENSTOCK has the belt to complete your look.

Alle Gürtel sind in den folgenden Größen erhältlich:

All belts are available in the following sizes:

Europe (cm)	75	80	85	90	95	100	105	110	999
International	S	M		L		XL		XXL	ONE SIZE
U.S. (inch)	30	32	34	36	38	40	42	44	ONE SIZE



1016433 | 80, 85, 90, 95, 100 | 7,500 JPY
KANSAS | BLACK | OILED LEATHER



1016435 | 80, 85, 90, 95, 100, ONESIZE | 7,500 JPY
KANSAS | COGNAC | OILED LEATHER

**UNISEX
KANSAS**

- Width: 35 mm
- Double buckle with BIRKENSTOCK logo
- Oiled cowhide (pull-up)
- Vegetable-tanned
- Made in Germany
- Also available in a one-size version with adjustable length

SPRING SUMMER 2021



1016500 | 80, 85, 90, 95, 100, 110CM | 9,500 JPY
KANSAS BIG BUCKLE | BLACK | OILED LEATHER

**WOMEN
KANSAS BIG BUCKLE**

- Width: 40 mm
- Color-coordinated Big buckle with BIRKENSTOCK logo
- Oiled cowskin (pull-up)
- Vegetable-tanned
- Made in Germany
- Sandal collection includes identical materials and colors for a perfectly coordinated look

BELTS



BAGS SPRING SUMMER 2021

AUTHENTIC QUALITY MADE IN GERMANY

premium line

Functionality, craftsmanship, and finesse - these are the values underpinning the BIRKENSTOCK Premium bag collection. We have taken our design inspiration from two centuries of classic bags, harmoniously bringing together their functional benefits with topclass natural materials, precision craftsmanship, and timeless elegance.

We offer a range of styles to suit all tastes and meet all life's challenges in the form of our backpacks, weekend bags and tote bags. We have been as uncompromising as ever in our choice of materials: whether ultra soft nubuck leather or vegetable-tanned natural leather, lightly washed canvas or polished brass. BIRKENSTOCK bags are made of high-quality materials that are carefully hand-crafted, fully in keeping with our traditional production processes.



● CORE

**UNISEX
MONACO**

- **Model:** Monaco.
- **Material:** Canvas/leather.
- **Functionality/innovation:** Canvas and vegetable-tanned leather gradually darkens and develops a unique patina, fully lined, reinforced underside and pocket flaps.
- **Newness:** CORE.

1000791 | ONE SIZE | 149,000 JPY
MONACO | GREEN | NATURAL LEATHER/COTTON



● CORE

1000793 | ONE SIZE | 179,000 JPY
ZURICH | BLACK | NUBUK



● CORE

1000792 | ONE SIZE | 139,000 JPY
ZURICH | BROWN | NATURAL LEATHER/COTTON

**UNISEX
ZURICH**

- **Model:** Zurich.
- **Material:** Canvas/leather.
- **Functionality/innovation:** Canvas and vegetable-tanned leather gradually darkens and develops a unique patina, upper part can be rolled in or out, fully lined.
- **Newness:** CORE.
- **Story Inspiration:** inspired by New Yorker Bike Messengers.



● CORE

1000779 | ONE SIZE | 109,000 JPY
VIENNA | BEIGE | NATURAL LEATHER/COTTON



● CORE

1000790 | ONE SIZE | 109,000 JPY
VIENNA | BLACK | NATURAL LEATHER/COTTON

**UNISEX
VIENNA**

- **Model:** Vienna.
- **Material:** Canvas/leather.
- **Functionality/innovation:** Canvas and vegetable-tanned leather gradually darkens and develops a unique patina, zip pocket and mobile phone compartment, fastened by a leather drawstring, can be carried by hand or worn over the shoulder, fully lined.
- **Newness:** CORE.



● CORE

1000798 | ONE SIZE | 139,000 JPY
HANOVER | GREEN | NATURAL LEATHER/COTTON



● CORE

1000799 | ONE SIZE | 189,000 JPY
HANOVER | BLACK | NUBUK

**UNISEX
HANOVER**

- **Model:** Hannover.
- **Material:** Canvas/leather.
- **Functionality/innovation:** Canvas and vegetable-tanned leather gradually darkens and develops a unique patina, genuine brass fittings, fully lined.
- **Newness:** CORE.



● CORE

1000796 | ONE SIZE | 139,000 JPY
BERLIN | BLACK | NUBUCK



● CORE

1000794 | ONE SIZE | 119,000 JPY
BERLIN | BLACK | NATURAL LEATHER/COTTON

**UNISEX
BERLIN**

- **Model:** Berlin.
- **Material:** Canvas/leather.
- **Functionality/innovation:** Sturdy leather base with practical studs, sides can be folded inward, giving the bag more or less volume, fully lined.
- **Newness:** CORE.



● CORE

1000795 | ONE SIZE | 119,000 JPY
BERLIN | OLIVE | NATURAL LEATHER/COTTON

SPRING SUMMER 2021



● CORE

**WOMEN
FLORENCE**

- **Models:** Florence.
- **Material:** Canvas/leather.
- **Functionality/innovation:** Canvas and vegetable-tanned leather gradually darkens and develops a unique patina, fully lined, volume can be adjusted using a leather-lined strap.
- **Newness:** CORE.

1000797 | ONE SIZE | 60,000 JPY
FLORENCE | BLACK | NATURAL LEATHER/COTTON

BAGS



● CORE

1000776 | ONE SIZE | 119,000 JPY
OSLO | BLACK | NATURAL LEATHER/COTTON



● CORE

1000778 | ONE SIZE | 119,000 JPY
OSLO | OLIVE | NATURAL LEATHER/COTTON

**UNISEX
OSLO**

- **Model:** Oslo.
- **Material:** Canvas/leather.
- **Functionality/innovation:** Canvas and vegetable-tanned leather gradually darkens and develops a unique patina, fully lined, numerous inside and outside pockets, which can be securely closed, and studs.
- **Newness:** CORE.



1007814 | LARGE | 27,000 JPY
COLOGNE BAG L | OLIVE | NATURAL LEATHER/COTTON



1007816 | MEDIUM | 24,000 JPY
COLOGNE BAG M | OLIVE | NATURAL LEATHER/COTTON

**UNISEX
COLOGNE**

- **Model:** Cologne Bag.
- **Material:** Canvas/leather.
- **Functionality/innovation:** Made of durable cotton-linen canvas in Germany, inside zip pocket, snap hook for shutting the upper opening, reinforced suede edges.
- **Newness:** CORE.



BLUE FOOTBED TRADITION |
)100115635-46\$EA
 (100115635-46CORE ESSENTIAL
 3,800 JPY



BLUE FOOTBED SPORTS |
)100117224-34 / 35-46\$EA
 (100117224-35-46CORE ESSENTIAL
 3,700 JPY / 3,800 JPY



BLUE FOOTBED TRADITION BLACK EDITION |
)100118835-46\$EA
 CORE ESSENTIAL
 3,800 JPY



BLUE FOOTBED SPORTS BLACK EDITION |
)100118035-46\$EA
 *100118135-46CORE ESSENTIAL
 3,800 JPY



LEATHER INSOLE |
)100124535-46\$EA
 (100124335-46CORE ESSENTIAL
 3,100 JPY



FOOTBED INSOLE BROWN |
)100125835-46\$EA
 CORE ESSENTIAL
 3,100 JPY



BIRKO ACTIVE MESH BLACK |
)100128435-46\$EA
 CORE ESSENTIAL
 3,900 JPY



BIRKO BASIC |
)100110935-46\$EA
 CORE ESSENTIAL
 4,500 JPY

SPRING SUMMER 2021

PROFESSIONAL | INSOLE



※価格は全て仮上代になります。変更になる場合がございますので、ご注意ください。

※実際の商品と写真の色味が異なって見える場合がございます。

※商品の仕様が予告なく変更になる場合がございます。

※本カタログの写真や文章の無断転用を禁止いたします。

BIRKENSTOCK JAPAN株式会社